

3050 Spruce Street, Saint Louis, MO 63103, USA

Website: [www.sigmaaldrich.com](http://www.sigmaaldrich.com)Email USA: [techserv@sial.com](mailto:techserv@sial.com)Outside USA: [eurtechserv@sial.com](mailto:eurtechserv@sial.com)

## Product Specification

Product Name:

Merrifield's peptide resin – 200–400 mesh, extent of labeling: 3.5–4.5 mmol/g Cl<sup>-</sup> loading, 1 % cross-linked

Product Number:

474517

CAS Number:

55844-94-5

Formula:

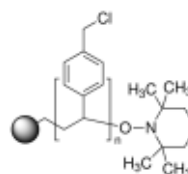
C<sub>25</sub>H<sub>25</sub>Cl

Formula Weight:

360.9 g/mol

Storage Temperature:

2 - 8 °C



### TEST

### Specification

Appearance (Color)	White to Beige
Appearance (Form)	Powder or Crystals
Infrared spectrum	Conforms to Structure
Titration by AgNO <sub>3</sub> % Cl	12.4 - 15.9 %
Miscellaneous Assay Titration by AgNO <sub>3</sub> (mmol Cl/g)	3.5 - 4.5
Substitution	3.5 - 4.5 mmol/g
Miscellaneous Assay Cross-Linking (1% DVB)	Conforms
Size Bead Size (200-400 Mesh)	Conforms
Loss on Drying	≤ 2.0 %
Miscellaneous Supplier Data Swelling in DCM (ml/g)	4.5 - 8.0
Miscellaneous Supplier Data Swelling in DMF (ml/g)	4.0 - 6.0

Specification: PRD.0.ZQ5.10000040247

Sigma-Aldrich warrants, that at the time of the quality release or subsequent retest date this product conformed to the information contained in this publication. The current Specification sheet may be available at [Sigma-Aldrich.com](http://Sigma-Aldrich.com). For further inquiries, please contact Technical Service. Purchaser must determine the suitability of the product for its particular use. See reverse side of invoice or packing slip for additional terms and conditions of sale.