

Gravimetric Certificate

**EHRENSTORFER™**

Product Identification

15898047 PBDE 47 (2,2',4,4'-Tetrabromodiphenylether)

Formula C₁₂H₆Br₄O

Mol.Weight 485.79

CAS No. 5436-43-1

Expiry Date 05.02.2020

Lot Number 168401ME

Store at 20°C in the dark

Please note: The expiry date is valid under recommended storage conditions only.

Gravimetric Data				
Product Name		Conc. (mg/l)	Purity %	Weight (mg)
PBDE 47 (2,2',4,4'-Tetrabromodiphenylether)		100.000	98.0	6.121
Solvent Information				
Solvent	Lot No.	Exact Quantity (ml)		
Methanol	1706451120	60.00		
Traceability Data				
15898047 114003	neat product			
15898047 168401ME	100.000 mg/l			
Analytical Data				
Detection: GC/ECD	Method Details:			
Column: DB-5, 30 m, ID 0.25 mm	Injector: 320° C			
Inj.-Vol.: 1.00 µl	Start Temperature: 120° C for 4 min			
Flow : 1.0 ml/min	End Temperature: 320° C for 5 min			
Ret.-Time: 16.45 min.	Gradient: 15° C/min			
Identity check RT				
Comment				
The uncertainty/tolerance of this standard is +/- 5.0 %, calculated in accordance with the EURACHEM/CITAC Guide - Quantifying Uncertainty in Analytical Measurement - Second Edition. The uncertainty given is the expanded combined uncertainty and represents an estimated standard deviation equal to the positive square root of the total variance of the uncertainty of components. The expanded uncertainty is U w hich is Uc(y)*K, w here K is the coverage factor at the 95% confidence level (K=2). The expanded uncertainty is based on the combination of uncertainties associated with each individual operation involved in the preparation of this product.				

Certified on 05.02.2018

by D. Schmid

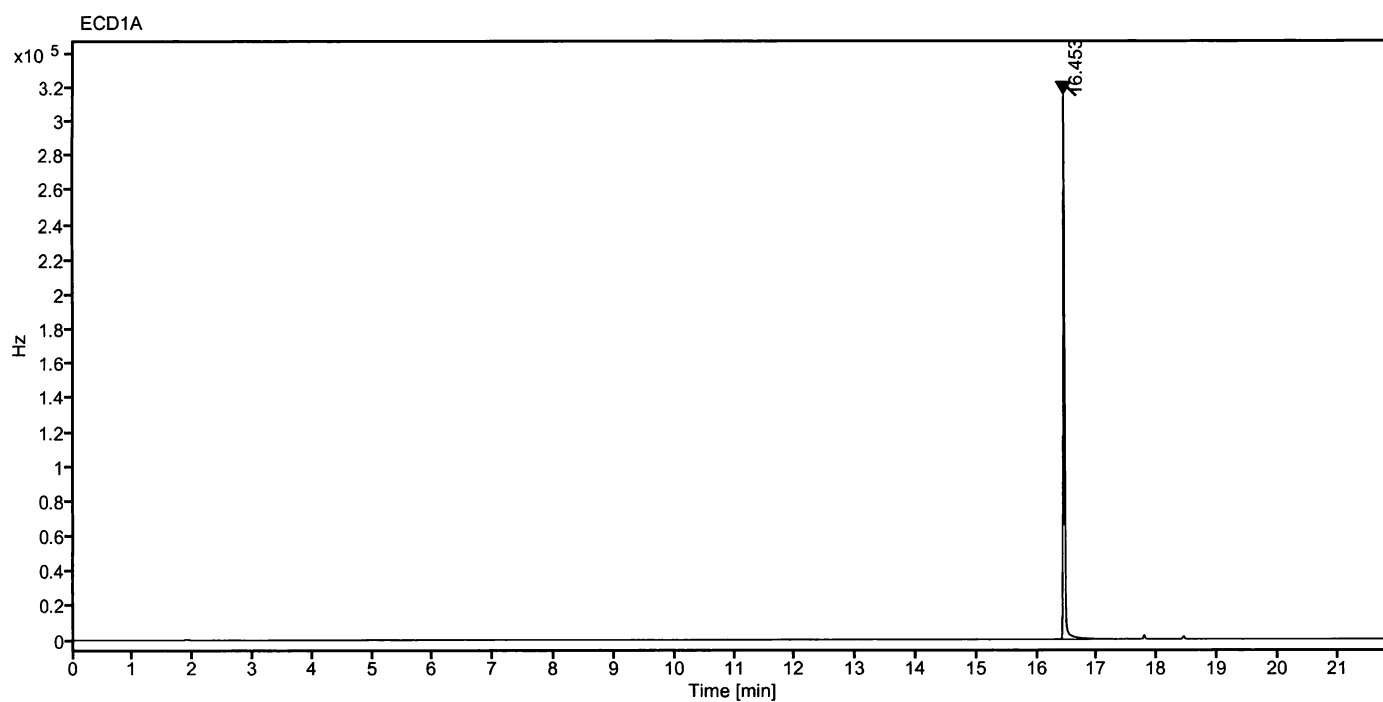
Schmid D.

The Laboratory LGC Labor GmbH is accredited by DAkkS as indicated by the Accreditation Number D-RM-19883-01 & D-PL-19883-01 has shown competence based on ISO Guide 34:2009 with relevant parts of DIN EN ISO/IEC 17025:2005 for production of certified reference materials in form of organic pure substances and in form of single and multi-component solutions organic pure substances.

LGC Labor GmbH · Bgm.-Schlosser-Str. 6 A · 86199 Augsburg · Germany
Phone +49 821 906080 · Fax +49 821 9060888 · augsburg.inquiry@lgcgroup.com
The warranty for this product is limited to the purchasing price of this product.

Data file: 15898047-32-r001.dx Instrument: ECD
Sample name: 168401ME Sequence Name: 2018KW05-5a
Inj. volume [µl]: 1.0 Injection date: 2/3/2018 12:53:03 AM
Acq. method: PAHK.amx Location: 45

Sample Description PBDE 47 (2,2',4,4'-Tetrabromodiphenylether)



Signal: ECD1A

Nr.	RT [min]	Area [Hz*s]	Height [Hz]	Area%	Width [min]
1	16.453	543638.39458	314982.44	100.00	0.026
	Sum	543638.39			

Schmid D.