

Reference Material

This certificate is designed in accordance with ISO 17034 and ISO Guide 31. This reference material (RM) was designed, produced and verified in accordance with ISO/IEC 17025, ISO 17034 and a registered quality management system ISO 9001.

Product Name
lambda-Cyhalothrin

Product Code
DRE-C11860000

Lot Number
G1322882

CAS No.
91465-08-6

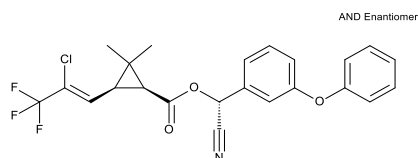
Format
Neat

Mol. Weight
449.85

Expiry Date
25 Nov 2028

Mol. Formula
C₂₃H₁₉ClF₃NO₃

Storage Temp
4°C ± 4°C



CERTIFIED

Purity
97.50% (g/g)

CERTIFIED

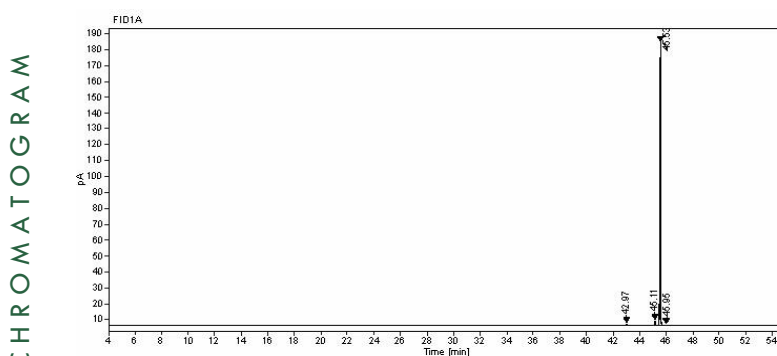
Expanded Uncertainty (U)
3.00% (g/g)

Uncertainty

The certified value(s) and uncertainty(ies) are determined in accordance with ISO 17034 with an 95% confidence level (k=2). Uncertainty is based on the Total Combined Uncertainty, including uncertainties of characterisation, homogeneity and stability testing. Stability values are based on real evidence opposed to simulation.

The producer certifies that this reference material meets the specification stated in this certificate until the expiry date, provided it is stored unopened at the recommended temperature herein. Product warranties for this reference material are set out in the terms and conditions of purchase.

CERTIFIED BY		CERTIFIED ON			RM Release
Dr. K. Wörmann		25 Nov 2022			



Signal:	FID1A					
Nr.	RT [min]	Area [pA*s]	Height [pA]	Area%	Width [min]	
1	42.97	5.42999	1.04	0.76	0.069	
2	45.11	10.98797	2.85	1.55	0.209	
3	45.53	693.42176	177.73	97.55	0.499	
4	45.95	0.99031	0.23	0.14	0.15	

Instrument

GC/FID

Detection

FID

Column

Optima-5MS, 0.25 µm, 0.25 mm

Method Details

Initial Temp: 60°C / 5 min, End Temp: 280°C / 6 min, Gradient: 5°C/min

Inj.-Vol.

1.0 µL

Flow

1 mL/min

Method of CharacterisationPurity was determined by quantitative ¹H-NMR**Method of Identification**

EA, NMR, RT, IR, MS, UV

Batch Information

Water Content: <0.10% (g/g) by Karl-Fischer-Titration (U(exp) = 0.04% (g/g)).

Main impurity are isomers. Depending on chromatographic method, the isomers may not be separated and lead to a higher observed purity.

Intended Use

This RM is intended for use in a laboratory as a calibration and quality control standard or in method development for analytical techniques.

Safety

Proper precautions should be observed while handling. See Safety Data Sheet.

Traceability

The balances used for gravimetric measurements are calibrated with weights traceable to the national standards (DKD). The calibration of

the balances is verified daily internally and annually by an external accredited calibration service. Chromatographic methods are traceable to the International System of Units (SI).

Homogeneity

Random replicate samples of the final packaged RM have been analysed to prove homogeneity compliant with ISO 17034.

Storage

The RM should be stored in the original sealed container at the indicated temperature.

Instructions for useIt is recommended to use 1 mg as the minimum sample size and if less material is used, to increase the certified uncertainty by a factor of two for half sample and four for a quarter of sample. If storage after opening is necessary, the RM should be tightly closed and kept from light and moisture. If the RM was in a sealed ampoule, it should be transferred to a vial with minimum head space. Visit the support section of our website lgcstandards.com for a series of Dr. Ehrenstorfer Tech Tip videos and frequently asked questions.**LGC Labor GmbH**Bgm.-Schlosser-Straße 6A
86199 Augsburg, Germany
T | +49 821 906080
F | +49 821 9060888
E | dr.ehrenstorfer@lgcgroup.comLGC Labor GmbH is accredited by
DAkks accreditation numbers
D-RM-19883-01-00 & D-PL-19883-01-00
on ISO 17034:2017 & ISO/IEC 17025:2018