

Rev03
Update: Aug,08,2025**DATASHEET**

Cripto Antibody, mAb, Rabbit

Cat. No.: A05145

Overview

Specificity	This product is specific to Cripto
Host Species	Rabbit
Immunogen	A synthesized peptide derived from human Cripto
Species Reactivity	Human
Conjugate	Unconjugated

Applications

Working concentrations for specific applications should be determined by the investigators. The appropriate concentrations may be affected by secondary antibody affinity, antigen concentration, the sensitivity of the method of detection, temperature, the length of the incubations, and other factors. The suitability of this antibody for applications other than those listed below has not been determined. The following concentration ranges are recommended starting points for this product.

Application	Recommended Usage
Western Blot	1:1000-1:2000
Immunocytochemistry/Immunofluorescence (ICC/IF)	1:50-1:200
Immunoprecipitation (IP)	1:20-1:50
Flow Cytometry	1:20-1:100

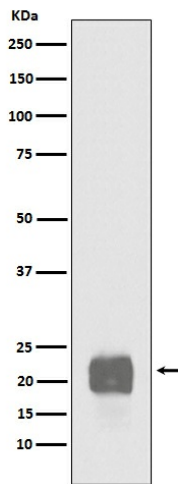
Properties

Form	Liquid
Storage Buffer	Supplied in 10mM phosphate buffered saline , pH 7.4, 150mM sodium chloride, 0.05% BSA, 0.02% sodium azide and 50% glycerol.
Storage Instructions	Store at -20°C. This product is stable for 1 year upon receipt, when handled and stored as instructed.
Purification	Affinity-chromatography
Isotype	Rabbit IgG

Clonality

Monoclonal

Examples



Western blot analysis of Cripto1 expression in NCCIT cell lysate.

Background

Target Background : GPI-anchored cell membrane protein involved in Nodal signaling. Cell-associated CRIPTO acts as a Nodal coreceptor in cis. Shedding of CRIPTO by TMEM8A modulates Nodal signaling by allowing soluble CRIPTO to act as a Nodal coreceptor on other cells. Could play a role in the determination of the epiblastic cells that subsequently give rise to the mesoderm.

Synonyms : CRGF; Cripto 1; cripto; Cripto1 growth factor; TDGF1;

For research use only. Not intended for human or animal clinical trials, therapeutic or diagnostic use.

Manufacturer: Nanjing GenScript Biotech Co., Ltd. No. 28Yongxi Road, Jiangning District, Nanjing, Jiangsu, China