

Rev05
 Update: Nov,06,2025

DATASHEET

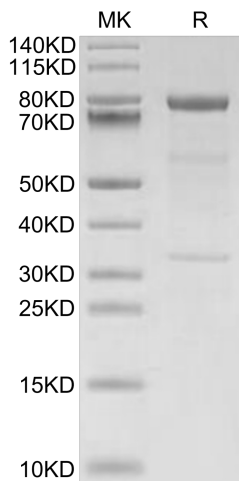
Complement C1s, His, Human

Cat. No.: Z05189

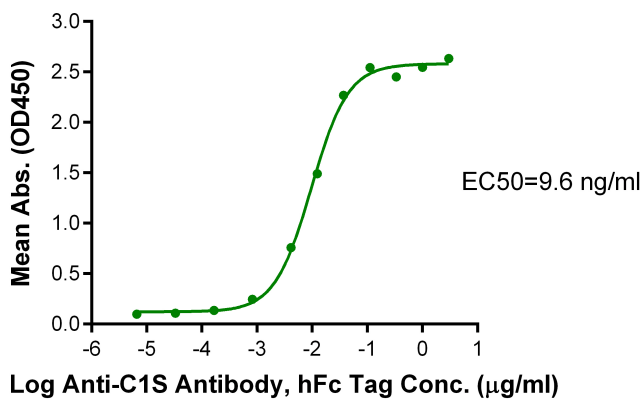
Product Introduction

Species	Human
Protein Construction	<div style="display: flex; align-items: center; justify-content: center;"> <div style="background-color: #0056b3; color: white; padding: 5px; text-align: center;"> Complement C1s (Glu16-Asp688) Accession # P09871 </div> <div style="background-color: #76b82a; color: white; padding: 5px; text-align: center; margin-left: 10px;"> His </div> </div> <div style="display: flex; justify-content: space-around; margin-top: 5px; font-size: small;"> N-term C-term </div>
Purity	> 90% as determined by Bis-Tris PAGE
Endotoxin Level	Less than 1EU per µg by the LAL method.
Biological Activity	Measured by its binding ability in a functional ELISA. Test result was comparable to standard batch.
Expression System	HEK293
Theoretical Molecular Weight	75.98 kDa
Apparent Molecular Weight	Due to enzyme lysis glycosylation, the protein migrates to 55-60 kDa (light chain), 32-35 kDa (heavy chain) and 76-96 kDa based on Bis-Tris PAGE result.
Formulation	Lyophilized from 0.22µm filtered solution in PBS (pH 7.4).
Reconstitution	Dissolve the lyophilized protein in distilled water. It is recommended to resuspend at 0.5 mg/mL if the lyophilized powder is 100 µg or less, at 1mg/ml for 500µg or 1mg lyophilized powder. Do not mix by vortex or vigorous shaking.
Storage & Stability	Upon receiving, the product remains stable for 6 months at -20°C or below. Upon reconstitution, the product should be stable for 3 months at -80°C. Avoid repeated freeze-thaw cycles.

Examples



Complement C1s, His, Human on Bis-Tris PAGE under reduced condition. The purity is greater than 95%.



Immobilized Complement C1s, His, Human, His Tag at 0.5 µg/ml (100 µl/well) on the plate. Dose response curve for Anti-C1S Antibody, hFc Tag with the EC50 of 9.6 ng/ml determined by ELISA.

Background

Target Background : Complement C1s protease inhibitors have potential utility in the treatment of diseases associated with activation of the classical complement pathway such as humorally mediated graft rejection, ischemia-reperfusion injury (IRI), vascular leak syndrome, and acute respiratory distress syndrome (ARDS).

Synonyms : EDSPD2; C1 esterase; Complement Component C1s

For research use only. Not intended for human or animal clinical trials, therapeutic or diagnostic use.

Manufacturer: Nanjing GenScript Biotech Co., Ltd. No. 28Yongxi Road, Jiangning District, Nanjing, Jiangsu, China