

Rev04  
 Update: Aug,20,2025

**DATASHEET**

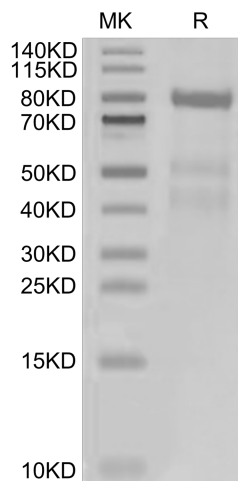
# Complement factor I, His, Human

Cat. No.: Z05193

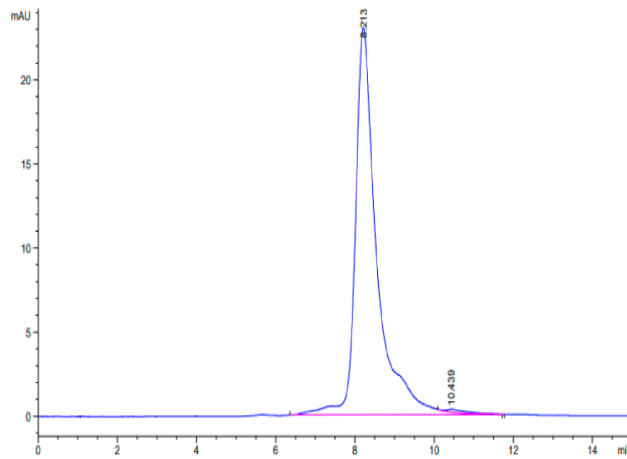
## Product Introduction

<b>Species</b>	Human
<b>Protein Construction</b>	<div style="display: flex; align-items: center; justify-content: space-between;"> <div style="background-color: #0056b3; color: white; padding: 5px; text-align: center;"> <b>Complement Factor I (Lys19-Val583)</b>            Accession # P05156         </div> <div style="background-color: #76b82a; color: white; padding: 5px; text-align: center;"> <b>His</b> </div> </div> <div style="display: flex; justify-content: space-between; margin-top: 5px; font-size: small;"> <span>N-term</span> <span>C-term</span> </div>
<b>Purity</b>	> 90% as determined by BisTris PAGE
<b>Endotoxin Level</b>	Less than 1EU per µg by the LAL method.
<b>Expression System</b>	HEK293
<b>Theoretical Molecular Weight</b>	64.58 kDa
<b>Apparent Molecular Weight</b>	Due to enzyme lysis and glycosylation, the protein migrates to 75-95 kDa based on Bis-Tris PAGE result.
<b>Formulation</b>	Lyophilized from 0.22µm filtered solution in 20mM Tris, 150mM NaCl (pH 8.0).
<b>Reconstitution</b>	Centrifuge the tube before opening. Reconstituting to a concentration more than 100 µg/ml is recommended. Dissolve the lyophilized protein in distilled water.
<b>Storage &amp; Stability</b>	Upon receiving, the product remains stable for 6 months at -20°C or below. Upon reconstitution, the product should be stable for 3 months at -80°C. Avoid repeated freeze-thaw cycles.

## Examples



Complement factor I, His, Human on Bis-Tris PAGE under reduced condition. The purity is greater than 95%.



The purity of Complement factor I, His, Human is greater than 95% as determined by SEC-HPLC.

## Background

**Target Background :** Complement factor I (CFI) is a serine protease which plays a key role in the modulation of complement system and the induced-fit factor responsible for controlling the complement-mediated processes.

**Synonyms :** EC:3.4.21.45; C3B/C4B inactivator; CFI; IF; C3BINA; FIC3b-INA; I factor (complement); KAF

**For research use only. Not intended for human or animal clinical trials, therapeutic or diagnostic use.**

Manufacturer: Nanjing GenScript Biotech Co., Ltd. No. 28Yongxi Road, Jiangning District, Nanjing, Jiangsu, China