

Rev04  
 Update: Aug,20,2025

**DATASHEET**

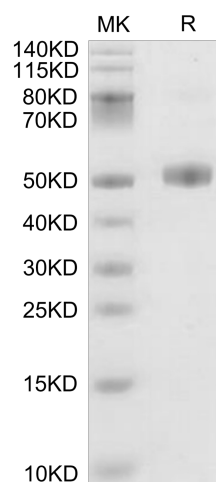
# FSHB hFc Chimera, Mouse

Cat. No.: Z06129

## Product Introduction

<b>Species</b>	Mouse
<b>Protein Construction</b>	<div style="display: flex; justify-content: space-around; align-items: center;"> <div style="background-color: #0056b3; color: white; padding: 5px; text-align: center;"> <b>FSHB (His20-Glu130)_x000D_</b>            Accession # Q60687         </div> <div style="background-color: #76b82a; color: white; padding: 5px; text-align: center;"> <b>hFc</b> </div> </div> <div style="display: flex; justify-content: space-around; margin-top: 5px;"> <span>N-term</span> <span>C-term</span> </div>
<b>Purity</b>	> 95% as determined by BisTris PAGE
<b>Endotoxin Level</b>	Less than 1EU per µg by the LAL method.
<b>Expression System</b>	HEK293
<b>Theoretical Molecular Weight</b>	39.2 kDa
<b>Apparent Molecular Weight</b>	Due to glycosylation, the protein migrates to 50-60 kDa based on Bis-Tris PAGE result.
<b>Formulation</b>	Lyophilized from 0.22µm filtered solution in PBS (pH 7.4).
<b>Reconstitution</b>	Centrifuge the tube before opening. Reconstituting to a concentration more than 100 µg/ml is recommended. Dissolve the lyophilized protein in distilled water.
<b>Storage &amp; Stability</b>	Upon receiving, the product remains stable for 6 months at -20°C or below. Upon reconstitution, the product should be stable for 3 months at -80°C. Avoid repeated freeze-thaw cycles.

## Examples



FSHB hFc Chimera, Mouse on Bis-Tris PAGE under reduced condition. The purity is greater than 95%.



The purity of FSHB hFc Chimera, Mouse is greater than 95% as determined by SEC-HPLC.

## Background

**Target Background :** Fertility is dependent on follicle-stimulating hormone (FSH), a product of gonadotrope cells of the anterior pituitary gland. Hypothalamic gonadotropin-releasing hormone (GnRH) and intra-pituitary activins are regarded as the primary drivers of FSH synthesis and secretion. Both stimulate expression of the FSH beta subunit gene (Fshb), although the underlying mechanisms of GnRH action are poorly described relative to those of the activins.

**Synonyms :** FSH-beta; FSH-B; FSHB; Follitropin;FSH- $\beta$

**For research use only. Not intended for human or animal clinical trials, therapeutic or diagnostic use.**

Manufacturer: Nanjing GenScript Biotech Co., Ltd. No. 28Yongxi Road, Jiangning District, Nanjing, Jiangsu, China