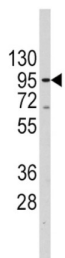
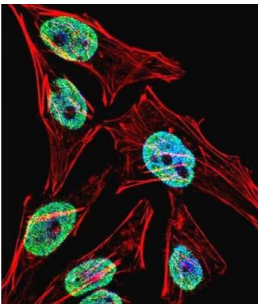
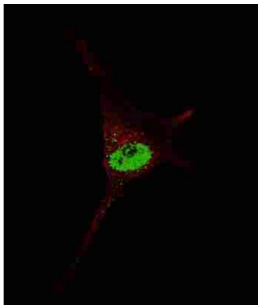


Telomerase Reverse Transcriptase (TERT) Antibody

Catalogue No.: abx027802



Telomerase is a ribonucleoprotein polymerase that maintains telomere ends by addition of the telomere repeat TTAGGG. The enzyme consists of a protein component with reverse transcriptase activity, encoded by this gene, and an RNA component which serves as a template for the telomere repeat. Telomerase expression plays a role in cellular senescence, as it is normally repressed in postnatal somatic cells resulting in progressive shortening of telomeres. Deregulation of telomerase expression in somatic cells may be involved in oncogenesis. Studies in mouse suggest that telomerase also participates in chromosomal repair, since de novo synthesis of telomere repeats may occur at double-stranded breaks.

Target: Telomerase Reverse Transcriptase (TERT)

Clonality: Polyclonal

Reactivity: Human

Tested Applications: ELISA, WB, IF/ICC, FCM

Host: Rabbit

Datasheet

Version: 3.0.0
Revision date: 05 Mar 2025



Recommended dilutions: WB: 1/2000, IF/ICC: 1/10 - 1/50, FCM: 1/10 - 1/50. Optimal dilutions/concentrations should be determined by the end user.

Conjugation: Unconjugated

Immunogen: KLH-conjugated synthetic peptide between 627-656 amino acids from the Central region of human TERT.

Isotype: IgG

Form: Liquid

Purification: Purified Rabbit Polyclonal Antibody.

Storage: Aliquot and store at -20°C. Avoid repeated freeze/thaw cycles.

UniProt Primary AC: O14746 ([UniProt](#), [ExPASy](#))

Gene Symbol: TERT

GeneID: [7015](#)

OMIM: [178500](#)

NCBI Accession: NP_001180305.1, NM_001193376.1

HGNC: 11730

KEGG: hsa:7015

Ensembl: ENSG00000164362

String: [9606.ENSP00000309572](#)

Molecular Weight: Calculated MW: 127 kDa

Buffer: PBS containing 0.09% sodium azide.

Note: THIS PRODUCT IS FOR RESEARCH USE ONLY. NOT FOR USE IN DIAGNOSTIC, THERAPEUTIC OR COSMETIC PROCEDURES. NOT FOR HUMAN OR ANIMAL CONSUMPTION.