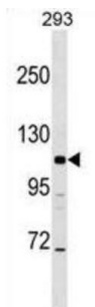


AP-3 Complex Subunit Beta-2 (AP3B2) Antibody

Catalogue No.: abx029127



Adaptor protein-3 (AP3) is a heterotetrameric vesicle-coat protein complex. Some AP3 subunits are ubiquitously expressed, whereas others are expressed exclusively in neurons. The neuron-specific AP3 complex, which includes AP3B2, is thought to serve neuron-specific functions such as neurotransmitter release (Grabner et al., 2006 [PubMed 16788073]).

Target:	AP-3 Complex Subunit Beta-2 (AP3B2)
Clonality:	Polyclonal
Reactivity:	Human
Tested Applications:	ELISA, WB
Host:	Rabbit
Recommended dilutions:	WB: 1/1000. Optimal dilutions/concentrations should be determined by the end user.
Conjugation:	Unconjugated
Immunogen:	KLH-conjugated synthetic peptide between 16-44 amino acids from the N-terminal region of human AP3B2.
Isotype:	IgG
Form:	Liquid
Purification:	Purified through a protein A column, followed by peptide affinity purification.
Storage:	Aliquot and store at -20°C. Avoid repeated freeze/thaw cycles.
UniProt Primary AC:	Q13367 (UniProt , ExPASy)
KEGG:	hsa:8120

Datasheet

Version: 4.0.0

Revision date: 28 Nov 2025



String: [9606.ENSF00000440984](#)

Molecular Weight: Calculated MW: 119 kDa

Buffer: PBS containing 0.09% sodium azide.

Specificity: Predicted to react with Mouse AP3B2.

Note: THIS PRODUCT IS FOR RESEARCH USE ONLY. NOT FOR USE IN DIAGNOSTIC, THERAPEUTIC OR COSMETIC PROCEDURES. NOT FOR HUMAN OR ANIMAL CONSUMPTION.

For Reference Only