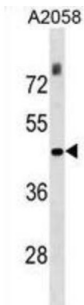


THO Complex Subunit 3 (THOC3) Antibody

Catalogue No.: abx029827



TEX1 is part of the TREX (transcription/export) complex, which includes THO2 (MIM 300395), HPR1 (MIM 606930), ALY (MIM 604171), and UAP56 (MIM 142560).

Target:	THO Complex Subunit 3 (THOC3)
Clonality:	Polyclonal
Reactivity:	Human
Tested Applications:	ELISA, WB
Host:	Rabbit
Recommended dilutions:	WB: 1/1000. Optimal dilutions/concentrations should be determined by the end user.
Conjugation:	Unconjugated
Immunogen:	KLH-conjugated synthetic peptide between 71-98 amino acids from the N-terminal region of human THOC3.
Isotype:	IgG
Form:	Liquid
Purification:	Purified through a protein A column, followed by peptide affinity purification.
Storage:	Aliquot and store at -20°C. Avoid repeated freeze/thaw cycles.
UniProt Primary AC:	Q96J01 (UniProt , ExPASy)
Gene Symbol:	THOC3

Datasheet

Version: 2.0.0
Revision date: 18 Mar 2025



KEGG: hsa:84321

String: [9606.ENSP00000265097](#)

Molecular Weight: Calculated MW: 38.8 kDa

Buffer: PBS containing 0.09% sodium azide.

Specificity: Predicted to react with Mouse and Cow THOC3.

Note: THIS PRODUCT IS FOR RESEARCH USE ONLY. NOT FOR USE IN DIAGNOSTIC, THERAPEUTIC OR COSMETIC PROCEDURES. NOT FOR HUMAN OR ANIMAL CONSUMPTION.

For Reference Only