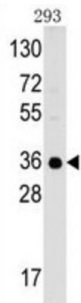


Complement C1q Binding Protein (C1QBP) Antibody

Catalogue No.: abx033710



The human complement subcomponent C1q associates with C1r and C1s in order to yield the first component of the serum complement system. C1QBP is known to bind to the globular heads of C1q molecules and inhibit C1 activation. This protein has also been identified as the p32 subunit of pre-mRNA splicing factor SF2, as well as a hyaluronic acid-binding protein.

Target:	Complement C1q Binding Protein (C1QBP)
Clonality:	Polyclonal
Reactivity:	Human
Tested Applications:	ELISA, WB
Host:	Rabbit
Recommended dilutions:	WB: 1/1000. Optimal dilutions/concentrations should be determined by the end user.
Conjugation:	Unconjugated
Immunogen:	KLH-conjugated synthetic peptide between 221-249 amino acids from the C-terminal region of human GC1qR (C1QBP).
Isotype:	IgG
Form:	Liquid
Purification:	Purified Rabbit Polyclonal Antibody.
Storage:	Aliquot and store at -20°C. Avoid repeated freeze/thaw cycles.
UniProt Primary AC:	Q07021 (UniProt , ExPASy)
KEGG:	hsa:708

Datasheet

Version: 2.0.0

Revision date: 28 Nov 2025



String: [9606.ENSF00000225698](#)

Molecular Weight: Calculated MW: 31.4 kDa

Buffer: PBS containing 0.09% sodium azide.

Specificity: Predicted to react with Mouse, Rat and Cow C1QBP.

Note: THIS PRODUCT IS FOR RESEARCH USE ONLY. NOT FOR USE IN DIAGNOSTIC, THERAPEUTIC OR COSMETIC PROCEDURES. NOT FOR HUMAN OR ANIMAL CONSUMPTION.

For Reference Only