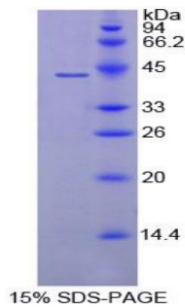


Mouse Complement Component 8b (C8b) Protein

Catalogue No.: abx066065



SDS-PAGE analysis of Mouse C8b Protein.

Recombinant Complement Component 8b (C8b) is a recombinant Mouse protein produced in a Prokaryotic expression system (E. coli).

Target: Complement Component 8b (C8b)

Origin: Mouse

Expression: Recombinant

Tested Applications: WB, SDS-PAGE

Host: E. coli

Conjugation: Unconjugated

Form: Lyophilized

Activity: Not tested

Purity: > 95%

Reconstitution: To keep the original salt concentration, we recommend reconstituting to the original concentration prior to lyophilization (see Concentration) in ddH₂O. If a lower concentration is required, dilute in PBS, pH 7.4. If a higher concentration is required, the product can be reconstituted directly in PBS, pH 7.4, though please note that this will change the overall salt concentration. The stock concentration should be between 0.1-1.0 mg/ml. Do not vortex.

Storage: Store at 2-8°C for up to one month. For long-term storage, store at -80°C. Avoid repeated freeze/thaw cycles.

UniProt Primary AC: Q8BH35 ([UniProt](#), [ExPASy](#))

KEGG: mmu:110382

Datasheet

Version: 3.0.0
Revision date: 29 Nov 2025



String: [10090.ENSMUSP00000031663](#)

Molecular Weight: Calculated MW: 42.8 kDa

Sequence Fragment: Cys161-Arg503

Sequence: CQREMEQYWA IDRLASGINL FTNTFEGPVL DHRYYAGGCS PHYILD TNFR KPYNVESYTP
QTKCEYEFTL TEYESYSDFE RLVIKETHM FNFTSGFKVD GVMDLGIKVE SNEGKNYVTR
TKRFAHTQSK FLHARVLEV AHYKLSRSL MLHYEFLQRV KSLPLEYSYG EYRDLLRDFG
THFITEAVLG GIYEYTLIMN KDAMEQGDYT LSHVTACAGG SFGIGGMVYK VYVKVGVSAK
KCSDIMKEIN ERNKRSTMVE DLVVLVRGGT SEDITALAYK ELPTPELMEA WGDAVKYNPA
IIKIKAEPLY ELVTATDFAY SSTVKQNLKK ALEEFQSEVS SCR

Tag: N-terminal His tag

Buffer: Prior to lyophilization: PBS, pH 7.4, containing 0.01% Sarcosyl, 1 mM DTT, 5% Trehalose and Proclin-300.

Concentration: Prior to lyophilization: 200 µg/ml

Note: THIS PRODUCT IS FOR RESEARCH USE ONLY. NOT FOR USE IN DIAGNOSTIC, THERAPEUTIC OR COSMETIC PROCEDURES. NOT FOR HUMAN OR ANIMAL CONSUMPTION.

For Reference Only