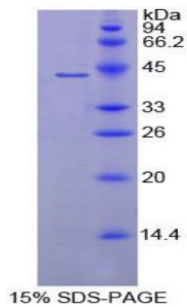


## Mouse Complement Component 8b (C8b) Protein

Catalogue No.: abx066065



SDS-PAGE analysis of Mouse C8b Protein.

Mouse Complement Component 8b (C8b) is a recombinant Mouse protein expressed in *E. coli*.

**Target:** Complement Component 8b (C8b)

**Origin:** Mouse

**Expression:** Recombinant

**Tested Applications:** WB, SDS-PAGE

**Host:** *E. coli*

**Conjugation:** Unconjugated

**Form:** Lyophilized

**Activity:** Not tested

**Purity:** > 95%

**Reconstitution:** To keep the original salt concentration, we recommend reconstituting to the original concentration prior to lyophilization (see Concentration) in ddH<sub>2</sub>O. If a lower concentration is required, dilute in PBS, pH 7.4. If a higher concentration is required, the product can be reconstituted directly in PBS, pH 7.4, though please note that this will change the overall salt concentration. The stock concentration should be between 0.1-1.0 mg/ml. Do not vortex.

**Storage:** Store lyophilized form at 2-8°C for up to 1 month. For longer periods, store lyophilized or liquid at -80°C. Avoid repeated freeze-thaw cycles.

**Shelf Life:** 12 months.

**UniProt Primary AC:** Q8BH35 ([UniProt](#), [ExPASy](#))

# Datasheet

Version: 5.0.0  
Revision date: 21 Feb 2026



**KEGG:** mmu:110382

**String:** [10090.ENSMUSP00000031663](#)

**Molecular Weight:** Calculated MW: 42.8 kDa

**Sequence Fragment:** Cys161-Arg503

**Sequence:** CQREMEQYWA IDRLASGINL FTNTFEGPVL DHRYYAGGCS PHYILD TNFR KPYNVESYTP  
QTKCEYEFTL TEYESYSDFE RLVIK KTHM FNFTSGFKVD GVMDLGIKVE SNEGKNYVTR  
TKRFAHTQSK FLHARSVLEV AHYKLSRSL MLHYEFLQRV KSLPLEYSYG EYRDLLRDFG  
THFITEAVLG GIYEYTLIMN KDAMEQGDYT LSHVTACAGG SFGIGGMVYK VYVKVGVSAK  
KCSDIMKEIN ERNKRSTMVE DLVVLVRGGT SEDITALAYK ELPTPELMEA WGDVAVKYNPA  
IIKIKAEPLY ELVTATDFAY SSTVKQNLKK ALEEFQSEVS SCR

**Tag:** N-terminal His tag

**Buffer:** Prior to lyophilization: PBS, pH 7.4, containing 0.01% Sarcosyl, 1 mM DTT, 5% Trehalose and Proclin-300.

**Concentration:** Prior to lyophilization: 200 µg/ml

**Note:** THIS PRODUCT IS FOR RESEARCH USE ONLY. NOT FOR USE IN DIAGNOSTIC, THERAPEUTIC OR COSMETIC PROCEDURES. NOT FOR HUMAN OR ANIMAL CONSUMPTION.

For Reference Only