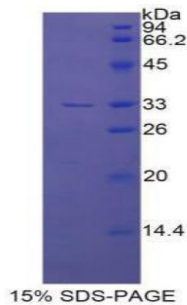


Human Endothelin Converting Enzyme 1 (ECE1) Protein

Catalogue No.: abx066416



SDS-PAGE analysis of Human ECE1 Protein.

Human Endothelin Converting Enzyme 1 (ECE1) is a recombinant Human protein expressed in *E. coli*.

Target: Endothelin Converting Enzyme 1 (ECE1)

Origin: Human

Expression: Recombinant

Tested Applications: WB, SDS-PAGE

Host: *E. coli*

Conjugation: Unconjugated

Form: Lyophilized

Activity: Not tested

Purity: > 95%

Reconstitution: To keep the original salt concentration, we recommend reconstituting to the original concentration prior to lyophilization (see Concentration) in ddH₂O. If a lower concentration is required, dilute in PBS, pH 7.4. If a higher concentration is required, the product can be reconstituted directly in PBS, pH 7.4, though please note that this will change the overall salt concentration. The stock concentration should be between 0.1-1.0 mg/ml. Do not vortex.

Storage: Store lyophilised form at 2-8°C for up to 1 month. For longer periods, store lyophilised or liquid at -80°C. Avoid repeated freeze-thaw cycles.

UniProt Primary AC: P42892 ([UniProt](#), [ExPASy](#))

Molecular Weight: Calculated MW: 32.8 kDa

Datasheet

Version: 5.0.0
Revision date: 09 Jan 2026



Sequence Fragment: Leu469-Glu721

Sequence: LE IKKAFEEELS TLKWMDEETR KSAKEKADAI YNMIGYPNFI MDPKELDKVF NDYTAVPDLY
FENAMRFFNF SWRVTDQLR KAPNRDQWSM TPPMVNAYYS PTKNEIVFPA GILQAPFYTR
SSPKALNFGG IGVVVGHELT HAFDDQGREY DKDGNLRPWW KNSSVEAFKR QTECMVEQYS
NYSVNGEPVN GRHTLGENIA DNGGLKAAYR AYQNWVKKNG AEHSLPTLGL TNNQLFFLGF
AQVWCSVRTP E

Tag: N-terminal His tag

Buffer: Prior to lyophilization: PBS, pH 7.4, containing 0.01% Sarcosyl, 1 mM DTT, 5% Trehalose and Proclin-300.

Concentration: Prior to lyophilization: 200 µg/ml

Note: THIS PRODUCT IS FOR RESEARCH USE ONLY. NOT FOR USE IN DIAGNOSTIC, THERAPEUTIC OR COSMETIC PROCEDURES. NOT FOR HUMAN OR ANIMAL CONSUMPTION.

For Reference Only