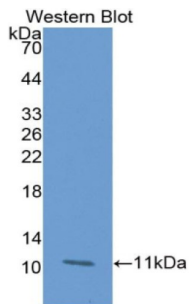
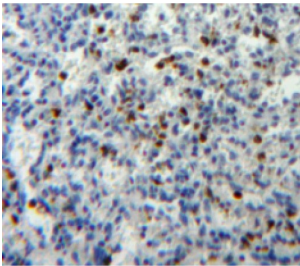


Glutaredoxin (GLRX) Antibody

Catalogue No.: abx104983



Western blot analysis of the recombinant protein.



IHC-P analysis of Spleen tissue, with DAB staining.

Glutaredoxin Antibody is a Rabbit Polyclonal against Glutaredoxin.

Target:	Glutaredoxin (GLRX)
Clonality:	Polyclonal
Reactivity:	Human
Tested Applications:	WB
Host:	Rabbit
Recommended dilutions:	WB: 0.01-2 µg/ml, IHC (Predicted): 5-20 µg/ml, IF/ICC (Predicted): 5-20 µg/ml. Optimal dilutions/concentrations should be determined by the end user.
Conjugation:	Unconjugated
Immunogen:	GLRX (Ala2-Gln106)
Form:	Liquid
Purification:	Purified by antigen-specific affinity chromatography, followed by Protein A affinity chromatography.
Storage:	Aliquot and store at -20°C. Avoid repeated freeze/thaw cycles.

Datasheet

Version: 4.0.0
Revision date: 23 Feb 2026



Shelf Life: 24 months.

UniProt Primary AC: P35754 ([UniProt](#), [ExPASy](#))

KEGG: hsa:2745

String: [9606.ENSP00000369314](#)

Buffer: 0.01 M PBS, pH 7.4, containing 0.05% Proclin-300, 50% glycerol.

Note: THIS PRODUCT IS FOR RESEARCH USE ONLY. NOT FOR USE IN DIAGNOSTIC, THERAPEUTIC OR COSMETIC PROCEDURES. NOT FOR HUMAN OR ANIMAL CONSUMPTION.

For Reference Only