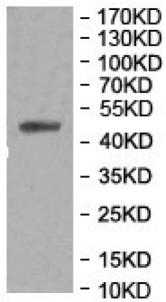


Datasheet

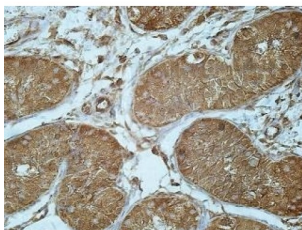
Version: 3.0.0
Revision date: 06 Sep 2025

Protein Furry Homolog-Like (FRYL) Antibody

Catalogue No.: abx122890



WB analysis of the recombinant protein, using FRYL antibody. Calculated MW: 46 kDa



IHC-P analysis of fetal testis tissue, with cytoplasmic staining.

This product is currently under production. The lead time for this product may be several months. Please contact us at info@abbexa.com for the lead time before purchasing this product.

Rabbit Polyclonal against the FRYL protein.

Target: Protein Furry Homolog-Like (FRYL)

Clonality: Polyclonal

Reactivity: Human

Tested Applications: ELISA, WB, IHC

Host: Rabbit

Recommended dilutions: ELISA: 1/20000 - 1/80000, WB: 1/500 - 1/2000, IHC: 1/100 - 1/200. Optimal dilutions/concentrations should be determined by the end user.

Conjugation: Unconjugated

Immunogen: Recombinant fragment corresponding to 1-134 AA of human FRYL.

Isotype: IgG

Datasheet

Version: 3.0.0
Revision date: 06 Sep 2025



Form:	Lyophilized
Purification:	Purified by antigen affinity column chromatography.
Reconstitution:	Reconstitute in 100 µl of sterile distilled H ₂ O with 50% glycerol.
Storage:	Store at -20 °C. Avoid repeated freeze/thaw cycles.
UniProt Primary AC:	O94915 (UniProt , ExPASy)
Gene Symbol:	FRYL
GeneID:	285527
NCBI Accession:	BC021803
HGNC:	29127
KEGG:	hsa:285527
Molecular Weight:	Observed MW: 46 kDa (Recombinant Protein)
Buffer:	Prior to lyophilization: 1% BSA and 0.02% NaN ₃ .
Specificity:	Predicted to react with Mouse and Rat FRYL.
Concentration:	Lyophilized form: Not applicable. After reconstitution: 1 mg/ml.
Note:	THIS PRODUCT IS FOR RESEARCH USE ONLY. NOT FOR USE IN DIAGNOSTIC, THERAPEUTIC OR COSMETIC PROCEDURES. NOT FOR HUMAN OR ANIMAL CONSUMPTION.

FOR REFERENCE ONLY