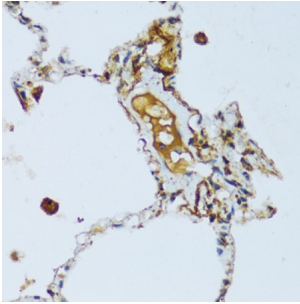
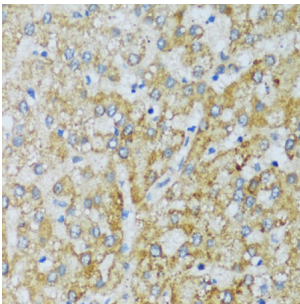


Complement Component 1q Subcomponent C (C1qC) Antibody

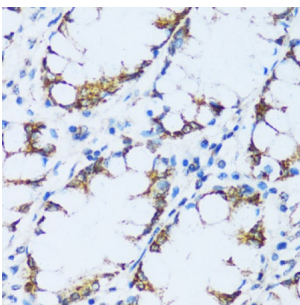
Catalogue No.: abx123575



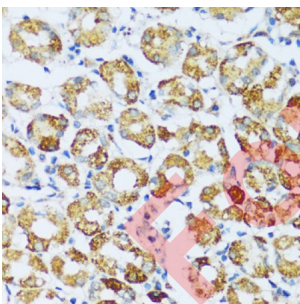
Immunohistochemistry of paraffin-embedded Human lung using C1QC Antibody (1/100 dilution, 40x lens).



Immunohistochemistry of paraffin-embedded Human liver using C1QC Antibody (1/100 dilution, 40x lens).



Immunohistochemistry of paraffin-embedded Human colon using C1QC Antibody (1/100 dilution, 40x lens).



Immunohistochemistry of paraffin-embedded Human stomach using C1QC Antibody (1/100 dilution, 40x lens).

C1qC Antibody is a Rabbit Polyclonal Antibody against C1qC.

Target: Complement Component 1q Subcomponent C (C1qC)

Clonality: Polyclonal

Reactivity: Human

Datasheet

Version: 3.0.0
Revision date: 25 Jan 2026



Tested Applications:	IHC
Host:	Rabbit
Recommended dilutions:	IHC-P: 1/50 - 1/100. Not tested in IHC-F. Optimal dilutions/concentrations should be determined by the end user.
Conjugation:	Unconjugated
Immunogen:	A synthetic peptide corresponding to human C1QC
Isotype:	IgG
Form:	Liquid
Purification:	Purified by affinity chromatography.
Storage:	Aliquot and store at -20°C. Avoid repeated freeze/thaw cycles.
UniProt Primary AC:	P02747 (UniProt , ExPASy)
GeneID:	714
NCBI Accession:	NP_001107573.1
Buffer:	PBS, pH 7.3, containing 0.02% sodium azide, 50% glycerol.
Concentration:	1 mg/ml
Note:	THIS PRODUCT IS FOR RESEARCH USE ONLY. NOT FOR USE IN DIAGNOSTIC, THERAPEUTIC OR COSMETIC PROCEDURES. NOT FOR HUMAN OR ANIMAL CONSUMPTION.

FOR REFERENCE ONLY