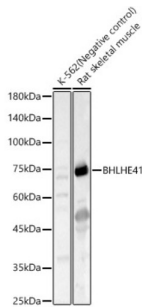


Class E Basic Helix-Loop-Helix Protein 41 (BHLHE41) Antibody

Catalogue No.: abx125566



Western blot analysis of various lysates, using BHLHE41 Antibody at 1/1500 dilution.
Secondary antibody: HRP-conjugated Goat anti-Rabbit IgG (H+L) at 1/10000 dilution.
Lysates/proteins: 25 µg per lane. Blocking buffer: 3% nonfat dry milk in TBST. Exposure time: 30s.

BHLHE41 Antibody is a Rabbit Polyclonal against BHLHE41.

Target:	Class E Basic Helix-Loop-Helix Protein 41 (BHLHE41)
Clonality:	Polyclonal
Reactivity:	Human, Rat
Tested Applications:	ELISA, WB
Host:	Rabbit
Recommended dilutions:	ELISA: 1 µg/ml, WB: 1/1000 - 1/2000. Optimal dilutions/concentrations should be determined by the end user.
Conjugation:	Unconjugated
Immunogen:	Recombinant protein corresponding to BHLHE41. The exact sequence is proprietary.
Isotype:	IgG
Form:	Liquid
Purification:	Purified by affinity chromatography.
Storage:	Aliquot and store at -20°C. Avoid repeated freeze/thaw cycles.
UniProt Primary AC:	Q9C0J9 (UniProt , ExPASy)
Gene Symbol:	BHLHE41
GeneID:	79365

Datasheet

Version: 2.0.0
Revision date: 02 Dec 2025



NCBI Accession: NP_110389.1

String: [9606.ENSP00000242728](#)

Molecular Weight: Calculated MW: 50 kDa
Observed MW: 75 kDa

Buffer: PBS, pH 7.3, containing 0.05% Proclin-300, 50% glycerol.

Concentration: > 0.2 mg/ml

Note: THIS PRODUCT IS FOR RESEARCH USE ONLY. NOT FOR USE IN DIAGNOSTIC, THERAPEUTIC OR COSMETIC PROCEDURES. NOT FOR HUMAN OR ANIMAL CONSUMPTION.

For Reference Only