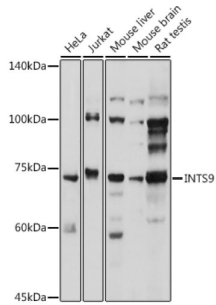


# Datasheet

Version: 2.0.0  
Revision date: 25 Jan 2026

## Integrator Complex Subunit 9 (INTS9) Antibody

Catalogue No.: abx126009



Western blot analysis of extracts of various cell lines using INTS9 Antibody (1/1000 dilution).

INTS9 Antibody is a Rabbit Polyclonal against INTS9.

**Target:** Integrator Complex Subunit 9 (INTS9)

**Clonality:** Polyclonal

**Reactivity:** Human, Mouse, Rat

**Tested Applications:** WB

**Host:** Rabbit

**Recommended dilutions:** WB: 1/1000 - 1/2000. Optimal dilutions/concentrations should be determined by the end user.

**Conjugation:** Unconjugated

**Immunogen:** Recombinant fusion protein corresponding to human INTS9

**Isotype:** IgG

**Form:** Liquid

**Purification:** Purified by affinity chromatography.

**Storage:** Aliquot and store at -20°C. Avoid repeated freeze/thaw cycles.

**UniProt Primary AC:** Q9NV88 ([UniProt](#), [ExpASY](#))

**Gene Symbol:** INTS9

**GeneID:** [55756](#)

# Datasheet

Version: 2.0.0  
Revision date: 25 Jan 2026



**NCBI Accession:** NP\_060720.2

**String:** [9606.ENSP00000429065](#)

**Molecular Weight:** Calculated MW: 71 kDa/73 kDa  
Observed MW: 74 kDa

**Buffer:** PBS, pH 7.3, containing 0.02% sodium azide, 50% glycerol.

**Concentration:** 1 mg/ml

**Note:** THIS PRODUCT IS FOR RESEARCH USE ONLY. NOT FOR USE IN DIAGNOSTIC, THERAPEUTIC OR COSMETIC PROCEDURES. NOT FOR HUMAN OR ANIMAL CONSUMPTION.

For Reference Only