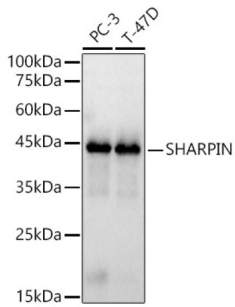
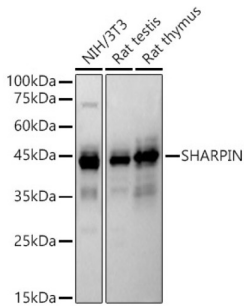


## SHARPIN (SHARPIN) Antibody

Catalogue No.: abx126547



Western blot analysis of various lysates, using SHARPIN Antibody at 1/900 dilution. Secondary antibody: HRP-conjugated Goat anti-Rabbit IgG (H+L) at 1/10000 dilution. Lysates/proteins: 25 µg per lane. Blocking buffer: 3% nonfat dry milk in TBST. Exposure time: 1s.



Western blot analysis of various lysates, using SHARPIN Antibody at 1/900 dilution. Secondary antibody: HRP-conjugated Goat anti-Rabbit IgG (H+L) at 1/10000 dilution. Lysates/proteins: 25 µg per lane. Blocking buffer: 3% nonfat dry milk in TBST. Exposure time: 180s.

SHARPIN Antibody is a Rabbit Polyclonal against SHARPIN.

**Target:** SHARPIN (SHARPIN)

**Clonality:** Polyclonal

**Reactivity:** Human, Mouse, Rat

**Tested Applications:** ELISA, WB

**Host:** Rabbit

**Recommended dilutions:** ELISA: 1 µg/ml, WB: 1/500 - 1/1000. Optimal dilutions/concentrations should be determined by the end user.

**Conjugation:** Unconjugated

**Immunogen:** Recombinant protein corresponding to SHARPIN. The exact sequence is proprietary.

**Isotype:** IgG

**Form:** Liquid

**Purification:** Purified by affinity chromatography.

# Datasheet

Version: 5.0.0  
Revision date: 24 Feb 2026



**Storage:** Aliquot and store at -20°C. Avoid repeated freeze/thaw cycles.

**Shelf Life:** 12 months.

**UniProt Primary AC:** Q9H0F6 ([UniProt](#), [ExPASy](#))

**Gene Symbol:** SHARPIN

**GeneID:** [81858](#)

**NCBI Accession:** NP\_112236.3

**String:** [9606.ENSP00000381698](#)

**Molecular Weight:** Calculated MW: 40 kDa  
Observed MW: 43 kDa

**Buffer:** PBS, pH 7.3, containing 0.05% Proclin-300, 50% glycerol.

**Concentration:** > 0.2 mg/ml

**Note:** THIS PRODUCT IS FOR RESEARCH USE ONLY. NOT FOR USE IN DIAGNOSTIC, THERAPEUTIC OR COSMETIC PROCEDURES. NOT FOR HUMAN OR ANIMAL CONSUMPTION.

For Reference Only