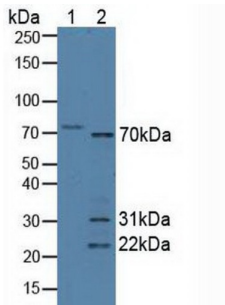
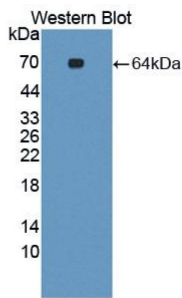


Syncoilin (SYNC) Antibody

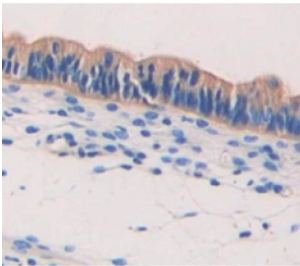
Catalogue No.: abx128347



Western blot analysis of (1) Human HeLa cells and (2) Mouse Heart Tissue.



Western blot analysis of recombinant Human SYNC.



IHC-P analysis of Human Tissue, with DAB staining.

Syncoilin Antibody is a Rabbit Polyclonal antibody against Syncoilin.

Target: Syncoilin (SYNC)

Clonality: Polyclonal

Reactivity: Human

Tested Applications: WB

Host: Rabbit

Recommended dilutions: WB: 0.01-2 µg/ml, IHC (Predicted): 5-20 µg/ml, IF/ICC (Predicted): 5-20 µg/ml. Optimal dilutions/concentrations should be determined by the end user.

Conjugation: Unconjugated

Datasheet

Version: 6.0.0
Revision date: 24 Feb 2026



Immunogen:	SYNC (Ile169-Pro458)
Form:	Liquid
Purification:	Purified by antigen-specific affinity chromatography, followed by Protein A affinity chromatography.
Storage:	Aliquot and store at -20°C. Avoid repeated freeze/thaw cycles.
Shelf Life:	24 months.
UniProt Primary AC:	Q9H7C4 (UniProt , ExPASy)
String:	9606.ENSP00000386439
Buffer:	0.01 M PBS, pH 7.4, containing 0.05% Proclin-300, 50% glycerol.
Note:	THIS PRODUCT IS FOR RESEARCH USE ONLY. NOT FOR USE IN DIAGNOSTIC, THERAPEUTIC OR COSMETIC PROCEDURES. NOT FOR HUMAN OR ANIMAL CONSUMPTION.

For Reference Only