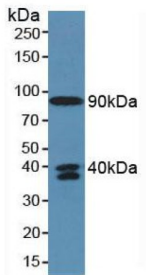
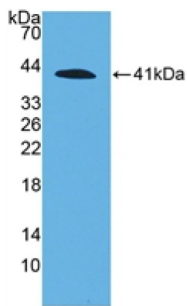


Complement Fragment C4a (C4a) Antibody

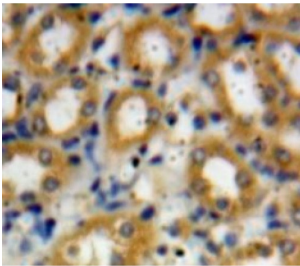
Catalogue No.: abx128515



Western blot analysis of Human Serum.



Western blot analysis of recombinant Human C4a.



IHC-P analysis of Liver tissue, with DAB staining.

Complement Fragment C4a (C4a) Antibody is a Rabbit Polyclonal against Complement Fragment C4a (C4a).

Target: Complement Fragment C4a (C4a)

Clonality: Polyclonal

Reactivity: Human

Tested Applications: WB

Host: Rabbit

Recommended dilutions: WB: 0.01-2 µg/ml, IHC (Predicted): 5-20 µg/ml, IF/ICC (Predicted): 5-20 µg/ml. Optimal dilutions/concentrations should be determined by the end user.

Conjugation: Unconjugated

Datasheet

Version: 4.0.0
Revision date: 24 Feb 2026



Immunogen:	abx166451 - Recombinant C4a (Asn680-Arg756) expressed in E. coli.
Form:	Liquid
Purification:	Purified by antigen-specific affinity chromatography, followed by Protein A affinity chromatography.
Storage:	Aliquot and store at -20°C. Avoid repeated freeze/thaw cycles.
Shelf Life:	24 months.
UniProt Primary AC:	P0C0L4 (UniProt , ExPASy)
Gene Symbol:	C4A
GeneID:	720
OMIM:	120790
HGNC:	1323
KEGG:	hsa:720, hsa:721
Ensembl:	ENSG00000206340
String:	9606.ENSP00000396688
Buffer:	0.01 M PBS, pH 7.4, containing 0.05% Proclin-300, 50% glycerol.
Note:	THIS PRODUCT IS FOR RESEARCH USE ONLY. NOT FOR USE IN DIAGNOSTIC, THERAPEUTIC OR COSMETIC PROCEDURES. NOT FOR HUMAN OR ANIMAL CONSUMPTION.

For Reference Only