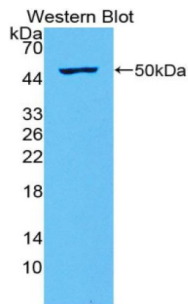
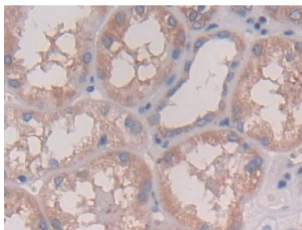


## Interferon Lambda-2 (IFNL2) Antibody

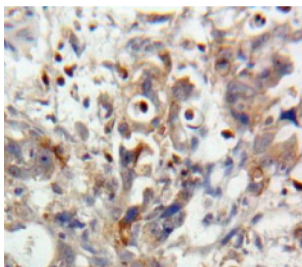
Catalogue No.: abx128586



Western blot analysis of the recombinant protein.



IHC-P analysis of Human Kidney Tissue, with DAB staining.



IHC-P analysis of Pancreas tissue, with DAB staining.

Interferon Lambda-2 Antibody is a Rabbit Polyclonal against Interferon Lambda-2.

**Target:** Interferon Lambda-2 (IFNL2)

**Research Area:** Infection Immunity

**Clonality:** Polyclonal

**Reactivity:** Human

**Tested Applications:** WB, IHC

**Host:** Rabbit

**Recommended dilutions:** WB: 0.01-2 µg/ml, IHC: 5-20 µg/ml, IF/ICC (Predicted): 5-20 µg/ml. Optimal dilutions/concentrations should be determined by the end user.

# Datasheet

Version: 3.0.0  
Revision date: 18 Jan 2026



<b>Conjugation:</b>	Unconjugated
<b>Immunogen:</b>	IL28A (Val26-Val200)
<b>Form:</b>	Liquid
<b>Purification:</b>	Purified by antigen-specific affinity chromatography, followed by Protein A affinity chromatography.
<b>Storage:</b>	Aliquot and store at -20°C. Avoid repeated freeze/thaw cycles.
<b>UniProt Primary AC:</b>	Q8IZJ0 ( <a href="#">UniProt</a> , <a href="#">ExPASy</a> )
<b>Gene Symbol:</b>	IFNL2
<b>GeneID:</b>	<a href="#">282616</a>
<b>KEGG:</b>	hsa:282616
<b>String:</b>	<a href="#">9606.ENSP00000333639</a>
<b>Buffer:</b>	0.01 M PBS, pH 7.4, containing 0.05% Proclin-300, 50% glycerol.
<b>Note:</b>	THIS PRODUCT IS FOR RESEARCH USE ONLY. NOT FOR USE IN DIAGNOSTIC, THERAPEUTIC OR COSMETIC PROCEDURES. NOT FOR HUMAN OR ANIMAL CONSUMPTION.

For Reference Only