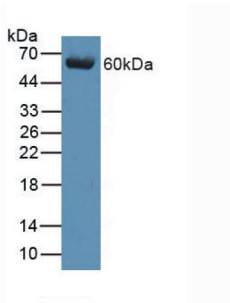
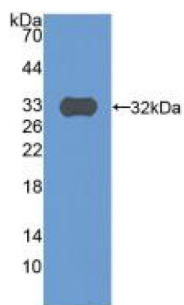


Complement Component 9 (C9) Antibody

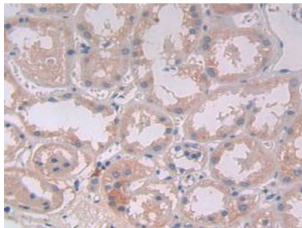
Catalogue No.: abx128589



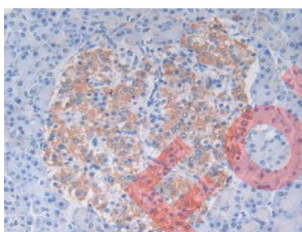
Western blot analysis of Human Serum.



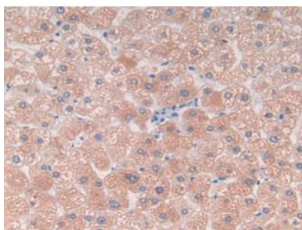
Western blot analysis of recombinant Human C9.



IHC-P analysis of Human Kidney Tissue, with DAB staining.



IHC-P analysis of Human Pancreas Tissue, with DAB staining.



IHC-P analysis of Human Liver Tissue, with DAB staining.

Datasheet

Version: 5.0.0
Revision date: 24 Feb 2026



Complement Component 9 Antibody is a Rabbit Polyclonal against Complement Component 9.

Target:	Complement Component 9 (C9)
Clonality:	Polyclonal
Reactivity:	Human
Tested Applications:	WB, IHC
Host:	Rabbit
Recommended dilutions:	WB: 0.01-2 µg/ml, IHC: 5-20 µg/ml, IF/ICC (Predicted): 5-20 µg/ml. Optimal dilutions/concentrations should be determined by the end user.
Conjugation:	Unconjugated
Immunogen:	C9 (Gln22-His265)
Form:	Liquid
Purification:	Purified by antigen-specific affinity chromatography, followed by Protein A affinity chromatography.
Storage:	Aliquot and store at -20°C. Avoid repeated freeze/thaw cycles.
Shelf Life:	24 months.
UniProt Primary AC:	P02748 (UniProt , ExPASy)
KEGG:	hsa:735
String:	9606.ENSP00000263408
Buffer:	0.01 M PBS, pH 7.4, containing 0.05% Proclin-300, 50% glycerol.
Concentration:	1 mg/ml
Note:	THIS PRODUCT IS FOR RESEARCH USE ONLY. NOT FOR USE IN DIAGNOSTIC, THERAPEUTIC OR COSMETIC PROCEDURES. NOT FOR HUMAN OR ANIMAL CONSUMPTION.