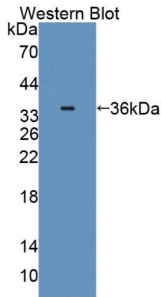
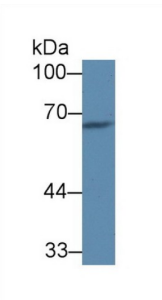


## Complement Component 8a (C8a) Antibody

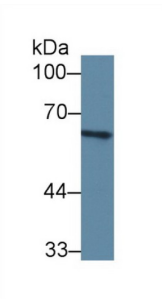
Catalogue No.: abx130907



Western blot analysis of the recombinant Rat C8a protein



Western blot analysis of Rat Heart lysate, using Rat C8a Antibody (1 µg/ml) and HRP-conjugated Goat Anti-Rabbit antibody ([abx400043](#), 0.2 µg/ml).



Western blot analysis of Rat gallbladder lysate, using using Rat C8a Antibody (1 µg/ml) and HRP-conjugated Goat Anti-Rabbit antibody ([abx400043](#), 0.2 µg/ml).

Complement Component 8a Antibody is a Rabbit Polyclonal against Complement Component 8a.

**Target:** Complement Component 8a (C8a)

**Clonality:** Polyclonal

**Reactivity:** Rat

**Tested Applications:** WB

**Host:** Rabbit

**Recommended dilutions:** WB: 0.01-2 µg/ml, IHC (Predicted): 5-20 µg/ml, IF/ICC (Predicted): 5-20 µg/ml. Optimal dilutions/concentrations should be determined by the end user.

**Conjugation:** Unconjugated

# Datasheet

Version: 5.0.0  
Revision date: 24 Feb 2026



<b>Immunogen:</b>	<a href="#">abx650474</a> - Recombinant C8a (Gln21-His300) expressed in E. coli.
<b>Form:</b>	Liquid
<b>Purification:</b>	Purified by antigen-specific affinity chromatography, followed by Protein A affinity chromatography.
<b>Storage:</b>	Aliquot and store at -20°C. Avoid repeated freeze/thaw cycles.
<b>Shelf Life:</b>	24 months.
<b>Buffer:</b>	PBS, pH 7.4, containing 0.02% Sodium azide, 50% glycerol.
<b>Concentration:</b>	1 mg/ml
<b>Note:</b>	THIS PRODUCT IS FOR RESEARCH USE ONLY. NOT FOR USE IN DIAGNOSTIC, THERAPEUTIC OR COSMETIC PROCEDURES. NOT FOR HUMAN OR ANIMAL CONSUMPTION.

For Reference Only