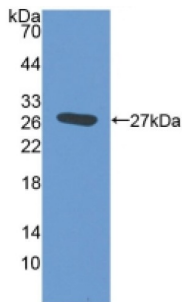


Elastin Microfibril Interface Located Protein 2 (EMILIN2) Antibody

Catalogue No.: abx131040



Western blot analysis of recombinant Mouse EMILIN2.

EMILIN2 Antibody is a Rabbit Polyclonal against EMILIN2.

Target:	Elastin Microfibril Interface Located Protein 2 (EMILIN2)
Clonality:	Polyclonal
Reactivity:	Mouse
Tested Applications:	WB
Host:	Rabbit
Recommended dilutions:	WB: 0.01-2 µg/ml, IHC (Predicted): 5-20 µg/ml, IF/ICC (Predicted): 5-20 µg/ml. Optimal dilutions/concentrations should be determined by the end user.
Conjugation:	Unconjugated
Immunogen:	abx650754 - Recombinant EMILIN2 (Arg853-Leu1074) expressed in E. coli
Form:	Liquid
Purification:	Purified by antigen-specific affinity chromatography, followed by Protein A affinity chromatography.
Storage:	Aliquot and store at -20°C. Avoid repeated freeze/thaw cycles.
Shelf Life:	24 months.
UniProt Primary AC:	Q8K482 (UniProt , ExPASy)
Gene Symbol:	EMILIN2
GeneID:	246707

Datasheet

Version: 7.0.0
Revision date: 24 Feb 2026



KEGG: mmu:246707

String: [10090.ENSMUSP00000024849](#)

Buffer: PBS, pH 7.4, containing 0.02% NaN₃, 50% glycerol.

Specificity: Cross-reacts with Rat EMILIN2.

Concentration: 1 mg/ml

Note: THIS PRODUCT IS FOR RESEARCH USE ONLY. NOT FOR USE IN DIAGNOSTIC, THERAPEUTIC OR COSMETIC PROCEDURES. NOT FOR HUMAN OR ANIMAL CONSUMPTION.

For Reference Only