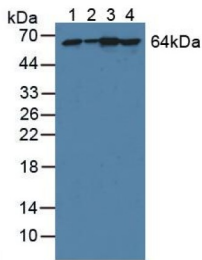
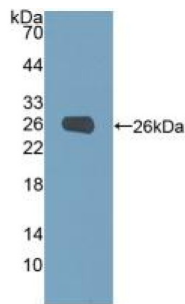


Phosphoglucomutase 1 (PGM1) Antibody

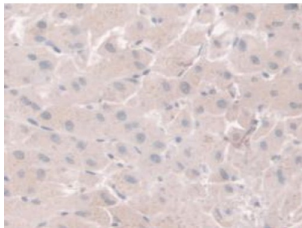
Catalogue No.: abx131094



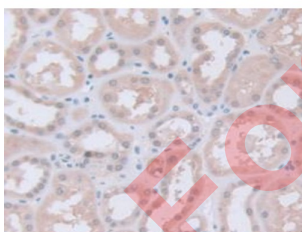
Western blot analysis of (1) Human HeLa cells, (2) Human 293T Cells, (3) Porcine Liver Tissue and (4) Porcine Heart Tissue.



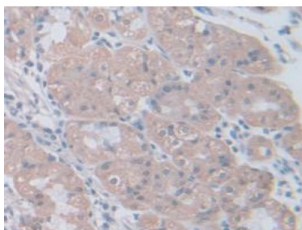
Western blot analysis of recombinant Human PGM1.



IHC-P analysis of Human Liver Tissue, with DAB staining.



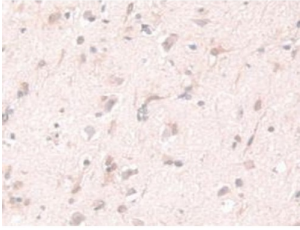
IHC-P analysis of Human Kidney Tissue, with DAB staining.



IHC-P analysis of Human Stomach Tissue, with DAB staining.

Datasheet

Version: 3.0.0
Revision date: 24 Feb 2026



IHC-P analysis of Human Brain Tissue, with DAB staining.

Phosphoglucomutase 1 Antibody is a Rabbit Polyclonal against Phosphoglucomutase 1.

Target:	Phosphoglucomutase 1 (PGM1)
Clonality:	Polyclonal
Reactivity:	Human
Tested Applications:	WB, IHC
Host:	Rabbit
Recommended dilutions:	WB: 0.01-2 µg/ml, IHC: 5-20 µg/ml, IF/ICC (Predicted): 5-20 µg/ml. Optimal dilutions/concentrations should be determined by the end user.
Conjugation:	Unconjugated
Immunogen:	PGM1 (Met1-Lys235)
Form:	Liquid
Purification:	Purified by antigen-specific affinity chromatography, followed by Protein A affinity chromatography.
Storage:	Aliquot and store at -20°C. Avoid repeated freeze/thaw cycles.
Shelf Life:	24 months.
Buffer:	0.01 M PBS, pH 7.4, containing 0.05% Proclin-300, 50% glycerol.
Note:	THIS PRODUCT IS FOR RESEARCH USE ONLY. NOT FOR USE IN DIAGNOSTIC, THERAPEUTIC OR COSMETIC PROCEDURES. NOT FOR HUMAN OR ANIMAL CONSUMPTION.