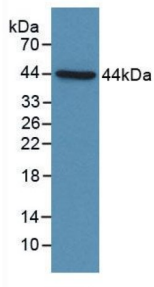


## Complement Component 4d (C4d) Antibody

Catalogue No.: abx132134



Western blot analysis of recombinant Human C4d.

Polyclonal Antibody to Complement Component 4d (C4d).

<b>Target:</b>	Complement Component 4d (C4d)
<b>Clonality:</b>	Polyclonal
<b>Reactivity:</b>	Human
<b>Tested Applications:</b>	WB
<b>Host:</b>	Rabbit
<b>Recommended dilutions:</b>	WB: 0.01-2 µg/ml, IHC (Predicted): 5-20 µg/ml, IF/ICC (Predicted): 5-20 µg/ml. Optimal dilutions/concentrations should be determined by the end user.
<b>Conjugation:</b>	Unconjugated
<b>Form:</b>	Liquid
<b>Purification:</b>	Purified by antigen-specific affinity chromatography, followed by Protein A affinity chromatography.
<b>Storage:</b>	Aliquot and store at -20°C. Avoid repeated freeze/thaw cycles.
<b>Shelf Life:</b>	24 months.
<b>UniProt Primary AC:</b>	P0C0L5 ( <a href="#">UniProt</a> , <a href="#">ExpASY</a> )
<b>KEGG:</b>	hsa:100293534, hsa:721
<b>String:</b>	<a href="#">9606.ENSP00000415941</a>
<b>Buffer:</b>	0.01 M PBS, pH 7.4, containing 0.05% Proclin-300, 50% glycerol.

# Datasheet

Version: 7.0.0

Revision date: 25 Feb 2026



**Note:**

THIS PRODUCT IS FOR RESEARCH USE ONLY. NOT FOR USE IN DIAGNOSTIC, THERAPEUTIC OR COSMETIC PROCEDURES. NOT FOR HUMAN OR ANIMAL CONSUMPTION.

For Reference Only