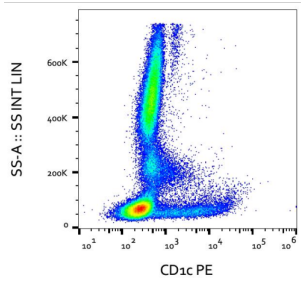
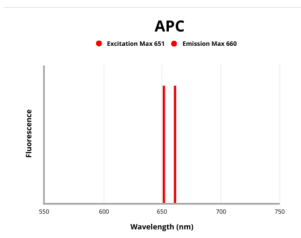


CD1c Antibody

Catalogue No.: abx140460



Surface staining of human peripheral blood cells with human CD1c Antibody (PE).



Fluorescence emission spectra of APC.

CD1c Antibody is a Mouse Monoclonal against CD1c.

Target: CD1c

Clonality: Monoclonal

Clone: I754

Reactivity: Human

Tested Applications: FCM

Host: Mouse

Recommended dilutions: FCM: 10 μ l/100 μ l of whole blood or 10^6 cells. Optimal dilutions/concentrations should be determined by the end user.

Conjugation: APC

Excitation/Emission: 651/660

Laser Line: 647

Immunogen: Human Thymocytes.

Datasheet

Version: 4.0.0
Revision date: 26 Mar 2025



Isotype:	IgG ₁ Kappa
Storage:	Store in the dark at 2-8°C. Avoid exposure to light. Do not freeze.
UniProt Primary AC:	P29017 (UniProt , ExPASy)
Gene Symbol:	CD1C
GeneID:	911
KEGG:	hsa:911
String:	9606.ENSP00000357152
Buffer:	Stabilizing PBS solution containing 15 mM sodium azide.
Specificity:	The mouse monoclonal antibody recognizes CD1c, (R7), a 43 kDa type I glycoprotein associated with beta2-microglobulin. It is expressed on cortical thymocytes (strongly), Langerhans cells, dendritic cells, B and some T cells.
Note:	THIS PRODUCT IS FOR RESEARCH USE ONLY. NOT FOR USE IN DIAGNOSTIC, THERAPEUTIC OR COSMETIC PROCEDURES. NOT FOR HUMAN OR ANIMAL CONSUMPTION.

For Reference Only