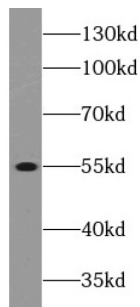


## Complement Component C3a Receptor (C3AR1) Antibody

Catalogue No.: abx148752



WB analysis of Rat spleen tissue, using C3AR1 antibody (1/1000 dilution).

Complement Component C3a Receptor (C3AR1) Antibody is a Rabbit Polyclonal antibody for the detection of C3AR1.

<b>Target:</b>	Complement Component C3a Receptor (C3AR1)
<b>Clonality:</b>	Polyclonal
<b>Reactivity:</b>	Human, Mouse, Rat
<b>Tested Applications:</b>	ELISA, WB
<b>Host:</b>	Rabbit
<b>Recommended dilutions:</b>	WB: 1/500 - 1/2000. Optimal dilutions/concentrations should be determined by the end user.
<b>Conjugation:</b>	Unconjugated
<b>Immunogen:</b>	C3a anaphylatoxin chemotactic receptor
<b>Isotype:</b>	IgG
<b>Form:</b>	Liquid
<b>Purity:</b>	≥ 95% (SDS-PAGE)
<b>Purification:</b>	Purified by immunogen affinity chromatography.
<b>Storage:</b>	Aliquot and store at -20°C. Avoid repeated freeze/thaw cycles.
<b>Validity:</b>	12 months.
<b>UniProt Primary AC:</b>	Q16581 ( <a href="#">UniProt</a> , <a href="#">ExPASy</a> )

# Datasheet

Version: 2.0.0  
Revision date: 20 Mar 2025



**Gene Symbol:** C3AR1

**GeneID:** [719](#)

**OMIM:** [605246](#)

**HGNC:** 1319

**KEGG:** hsa:719

**Ensembl:** ENSG00000171860

**String:** [9606.ENSP00000302079](#)

**Molecular Weight:** Observed MW: 55 kDa

**Buffer:** PBS, pH 7.3, with 0.02% sodium azide and 50% glycerol.

**Concentration:** 2 mg/ml

**Note:** THIS PRODUCT IS FOR RESEARCH USE ONLY. NOT FOR USE IN DIAGNOSTIC, THERAPEUTIC OR COSMETIC PROCEDURES. NOT FOR HUMAN OR ANIMAL CONSUMPTION.

For Reference Only