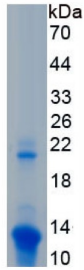
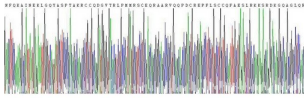


Human C4a Anaphylotoxin (C4A) Protein

Catalogue No.: abx166851



SDS-PAGE analysis of recombinant Human C4a Anaphylotoxin (C4A) Protein.



Gene sequencing extract of recombinant Human C4a Anaphylotoxin (C4A) Protein.

C4a Anaphylotoxin (C4A) Protein is a recombinant Human protein expressed in E. coli.

Target:	C4a Anaphylotoxin (C4A)
Research Area:	Metabolic Pathways, Infection Immunity, Immunology
Origin:	Human
Expression:	Recombinant
Tested Applications:	WB, SDS-PAGE
Host:	E. coli
Conjugation:	Unconjugated
Form:	Lyophilized
Activity:	Not tested
Purity:	> 80%
Reconstitution:	Reconstitute in ddH ₂ O to a concentration between 0.5-1.0 mg/ml. Do not vortex.

Datasheet

Version: 6.0.0
Revision date: 05 Dec 2025



Storage: Store at 2-8°C for up to one month. For long-term storage, store at -80°C. Avoid repeated freeze/thaw cycles.

UniProt Primary AC: P0COL5 ([UniProt](#), [ExPASy](#))

Gene Symbol: C4B

GeneID: [721](#)

OMIM: [120820](#)

HGNC: 1324

KEGG: hsa:100293534, hsa:721

Ensembl: ENSG00000228454

String: [9606.ENSP00000415941](#)

Molecular Weight: Calculated MW: 12.5 kDa
Observed MW (SDS-PAGE): 13 kDa

Sequence Fragment: Asn680-Arg756

Sequence: N VNFQKAIN EK LGQYASPTAK RCCQDGVTRL PMMRSCEQRA ARVQQPDCRE PFLSCCQFAE
SLRKSRDKG QAGLQR

Tag: N-terminal His tag

Buffer: Prior to lyophilization: PBS, pH 7.4, containing 0.01% Sarcosyl, 5% Trehalose.

Concentration: Prior to lyophilization: 1000 µg/ml

Note: THIS PRODUCT IS FOR RESEARCH USE ONLY. NOT FOR USE IN DIAGNOSTIC, THERAPEUTIC OR COSMETIC PROCEDURES. NOT FOR HUMAN OR ANIMAL CONSUMPTION.