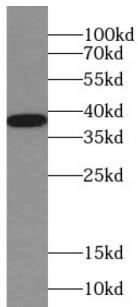
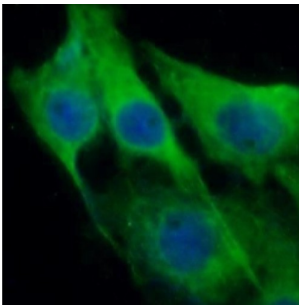


Class E Basic Helix-Loop-Helix Protein 22 (BHLHE22) Antibody

Catalogue No.: abx230887



WB analysis of SH-SY5Y cells, using BHLHE22 antibody (1/300 dilution).



IF analysis of SH-SY5Y cells, using BHLHE22 antibody (1/25 dilution) and AF488-conjugated Goat Anti-Rabbit IgG (H+L).

BHLHE22 Antibody is a Rabbit Polyclonal against BHLHE22.

Target:	Class E Basic Helix-Loop-Helix Protein 22 (BHLHE22)
Clonality:	Polyclonal
Reactivity:	Human, Mouse
Tested Applications:	ELISA, WB, IF/ICC
Host:	Rabbit
Recommended dilutions:	WB: 1/200 - 1/1000, IF/ICC: 1/10 - 1/100. Optimal dilutions/concentrations should be determined by the end user.
Conjugation:	Unconjugated
Immunogen:	basic helix-loop-helix family, member e22
Isotype:	IgG
Form:	Liquid
Purity:	≥ 95% (SDS-PAGE)

Datasheet

Version: 4.0.0
Revision date: 01 Nov 2025



Purification:	Purified by immunogen affinity chromatography.
Storage:	Aliquot and store at -20°C. Avoid repeated freeze/thaw cycles.
Shelf Life:	12 months.
UniProt Primary AC:	Q8NFJ8 (UniProt , ExPASy)
Gene Symbol:	BHLHE22
GeneID:	27319
OMIM:	613483
HGNC:	11963
KEGG:	hsa:27319
Ensembl:	ENSG00000180828
String:	9606.ENSP00000318799
Molecular Weight:	Observed MW: 37 kDa
Buffer:	PBS, pH 7.3, with 0.02% sodium azide and 50% glycerol.
Concentration:	2 mg/ml
Note:	THIS PRODUCT IS FOR RESEARCH USE ONLY. NOT FOR USE IN DIAGNOSTIC, THERAPEUTIC OR COSMETIC PROCEDURES. NOT FOR HUMAN OR ANIMAL CONSUMPTION.

For Reference Only