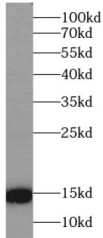


CST2-Specific Antibody

Catalogue No.: abx232033



WB analysis of human saliva tissue, using CST2-Specific antibody (1/600 dilution).

CST2-Specific Antibody is a Rabbit Polyclonal against CST2-Specific.

Target:	CST2-Specific
Clonality:	Polyclonal
Reactivity:	Human
Tested Applications:	ELISA, WB
Host:	Rabbit
Recommended dilutions:	WB: 1/500 - 1/1000. Optimal dilutions/concentrations should be determined by the end user.
Conjugation:	Unconjugated
Immunogen:	cystatin SA
Isotype:	IgG
Form:	Liquid
Purity:	≥ 95% (SDS-PAGE)
Purification:	Purified by immunogen affinity chromatography.
Storage:	Aliquot and store at -20°C. Avoid repeated freeze/thaw cycles.
Validity:	12 months.
UniProt Primary AC:	P09228 (UniProt , ExpASY)

Datasheet

Version: 2.0.0
Revision date: 06 Sep 2025



Gene Symbol:	CST2
GeneID:	1470
OMIM:	123856
HGNC:	2474
KEGG:	hsa:1470
Ensembl:	ENSG00000170369
String:	9606.ENSP00000307540
Molecular Weight:	Observed MW: 15 kDa
Buffer:	PBS, pH 7.3, with 0.02% sodium azide and 50% glycerol.
Concentration:	2 mg/ml
Note:	THIS PRODUCT IS FOR RESEARCH USE ONLY. NOT FOR USE IN DIAGNOSTIC, THERAPEUTIC OR COSMETIC PROCEDURES. NOT FOR HUMAN OR ANIMAL CONSUMPTION.

For Reference Only