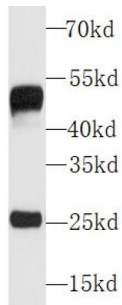


IgG control Antibody

Catalogue No.: abx234182



WB analysis of human plasma tissue, using Human IgG antibody (1/5000 dilution).

IgG control Antibody is a Rabbit Polyclonal against IgG control.

Target: IgG control**Clonality:** Polyclonal**Reactivity:** Human**Tested Applications:** ELISA, WB**Host:** Rabbit**Recommended dilutions:** WB: 1/2000 - 1/20000. Optimal dilutions/concentrations should be determined by the end user.**Conjugation:** Unconjugated**Immunogen:** Recombinant Protein**Isotype:** IgG**Form:** Liquid**Purity:** ≥ 95% (SDS-PAGE)**Purification:** Purified by immunogen affinity chromatography.**Storage:** Aliquot and store at -20°C. Avoid repeated freeze/thaw cycles.**Validity:** 12 months.**Molecular Weight:** Observed MW: 25 kDa, 50 kDa

Datasheet

Version: 3.0.0
Revision date: 07 Sep 2025



Buffer: PBS, pH 7.3, with 0.02% sodium azide and 50% glycerol.

Concentration: 2 mg/ml

Note: THIS PRODUCT IS FOR RESEARCH USE ONLY. NOT FOR USE IN DIAGNOSTIC, THERAPEUTIC OR COSMETIC PROCEDURES. NOT FOR HUMAN OR ANIMAL CONSUMPTION.

For Reference Only