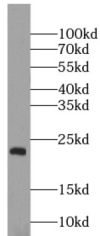
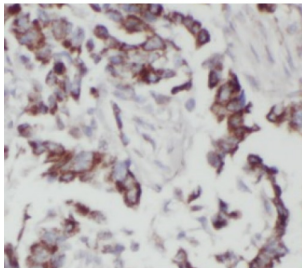


KRAS-2A-specific Antibody

Catalogue No.: abx234643



WB analysis of SH-SY5Y cells, using KRAS-2A-specific antibody (1/500 dilution).



IHC-P analysis of human lung cancer tissue, using KRAS-2A-specific antibody (1/50 dilution).

KRAS-2A-specific Antibody is a Rabbit Polyclonal against KRAS-2A-specific.

| | |
|-------------------------------|---|
| Target: | KRAS-2A-specific |
| Clonality: | Polyclonal |
| Reactivity: | Human, Mouse, Rat |
| Tested Applications: | ELISA, WB, IHC, IF/ICC |
| Host: | Rabbit |
| Recommended dilutions: | WB: 1/500 - 1/1000, IHC: 1/20 - 1/200, IF/ICC: 1/50 - 1/500. Optimal dilutions/concentrations should be determined by the end user. |
| Conjugation: | Unconjugated |
| Immunogen: | v-Ki-ras2 Kirsten rat sarcoma viral oncogene homolog |
| Isotype: | IgG |
| Form: | Liquid |
| Purity: | ≥ 95% (SDS-PAGE) |

Datasheet

Version: 2.0.0
Revision date: 05 Sep 2025



| | |
|----------------------------|--|
| Purification: | Purified by immunogen affinity chromatography. |
| Storage: | Aliquot and store at -20°C. Avoid repeated freeze/thaw cycles. |
| Validity: | 12 months. |
| UniProt Primary AC: | P01116 (UniProt , ExPASy) |
| Gene Symbol: | KRAS |
| GeneID: | 3845 |
| OMIM: | 190070 |
| HGNC: | 6407 |
| KEGG: | hsa:3845 |
| Ensembl: | ENSG00000133703 |
| String: | 9606.ENSP00000256078 |
| Molecular Weight: | Observed MW: 22 kDa |
| Buffer: | PBS, pH 7.3, with 0.02% sodium azide and 50% glycerol. |
| Concentration: | 2 mg/ml |
| Note: | THIS PRODUCT IS FOR RESEARCH USE ONLY. NOT FOR USE IN DIAGNOSTIC, THERAPEUTIC OR COSMETIC PROCEDURES. NOT FOR HUMAN OR ANIMAL CONSUMPTION. |

For Reference Only