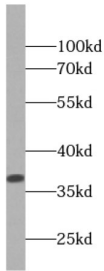
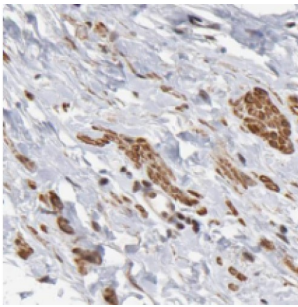


PPP1CB-Specific Antibody

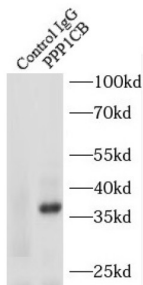
Catalogue No.: abx236695



WB analysis of human brain tissue, using PPP1CB antibody (1/1500 dilution).



IHC-P analysis of human prostate cancer tissue, using PPP1CB antibody (1/50 dilution).



IP analysis of mouse brain tissue lysate (4000 µg), using PPP1CB-Specific antibody (4 µg, detection: 1/1000 dilution).

PPP1CB-Specific Antibody is a Rabbit Polyclonal against PPP1CB-Specific.

Target: PPP1CB-Specific

Clonality: Polyclonal

Reactivity: Human, Mouse, Rat

Tested Applications: ELISA, WB, IHC, IF/ICC, IP

Host: Rabbit

Recommended dilutions: WB: 1/500 - 1/2000, IHC: 1/20 - 1/200, IF/ICC: 1/20 - 1/200, IP: 1/500 - 1/2000. Optimal dilutions/concentrations should be determined by the end user.

Conjugation: Unconjugated

Datasheet

Version: 1.0.0
Revision date: 06 Sep 2025



Immunogen:	protein phosphatase 1, catalytic subunit, beta isoform
Isotype:	IgG
Form:	Liquid
Purity:	≥ 95% (SDS-PAGE)
Purification:	Purified by immunogen affinity chromatography.
Storage:	Aliquot and store at -20°C. Avoid repeated freeze/thaw cycles.
Validity:	12 months.
UniProt Primary AC:	P62140 (UniProt , ExpASY)
Gene Symbol:	PPP1CB
GeneID:	5500
OMIM:	600590
HGNC:	9282
KEGG:	hsa:5500
Ensembl:	ENSG00000213639
String:	9606.ENSP00000378769
Molecular Weight:	Observed MW: 37 kDa
Buffer:	PBS, pH 7.3, with 0.02% sodium azide and 50% glycerol.
Concentration:	2 mg/ml
Note:	THIS PRODUCT IS FOR RESEARCH USE ONLY. NOT FOR USE IN DIAGNOSTIC, THERAPEUTIC OR COSMETIC PROCEDURES. NOT FOR HUMAN OR ANIMAL CONSUMPTION.