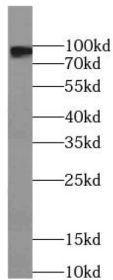
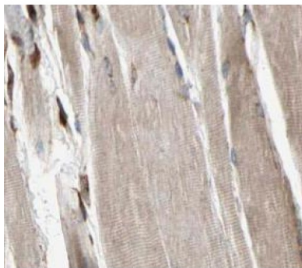


PYGM-Specific Antibody

Catalogue No.: abx236977



WB analysis of mouse skeletal muscle tissue, using PYGM-Specific antibody (1/1000 dilution).



IHC-P analysis of human skeletal muscle tissue, using PYGM-Specific antibody (1/50 dilution).

PYGM-Specific Antibody is a Rabbit Polyclonal against PYGM-Specific.

Target: PYGM-Specific

Clonality: Polyclonal

Reactivity: Human, Mouse, Rat

Tested Applications: ELISA, WB, IHC

Host: Rabbit

Recommended dilutions: WB: 1/500 - 1/2000, IHC: 1/20 - 1/200. Optimal dilutions/concentrations should be determined by the end user.

Conjugation: Unconjugated

Immunogen: phosphorylase, glycogen, muscle

Isotype: IgG

Form: Liquid

Purity: ≥ 95% (SDS-PAGE)

Datasheet

Version: 2.0.0
Revision date: 06 May 2025



Purification:	Purified by immunogen affinity chromatography.
Storage:	Aliquot and store at -20°C. Avoid repeated freeze/thaw cycles.
Validity:	12 months.
UniProt Primary AC:	P11217 (UniProt , ExPASy)
Gene Symbol:	PYGM
GeneID:	5837
KEGG:	hsa:5837
String:	9606.ENSP00000164139
Molecular Weight:	Observed MW: 97 kDa
Buffer:	PBS, pH 7.3, with 0.02% sodium azide and 50% glycerol.
Concentration:	2 mg/ml
Note:	THIS PRODUCT IS FOR RESEARCH USE ONLY. NOT FOR USE IN DIAGNOSTIC, THERAPEUTIC OR COSMETIC PROCEDURES. NOT FOR HUMAN OR ANIMAL CONSUMPTION.

For Reference Only