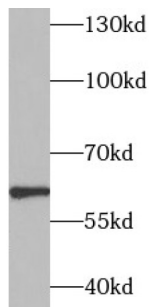
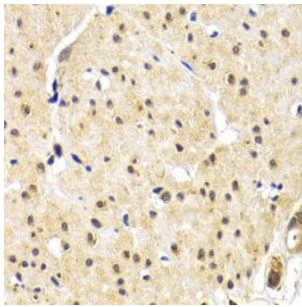


Telomeric Repeat-Binding Factor 1 (TERF1) Antibody

Catalogue No.: abx238597



WB analysis of HEK-293 cells, using TERF1 antibody (1/1000 dilution).



IHC-P analysis of human gastric cancer tissue, using TERF1 antibody (1/50 dilution).

TERF1 Antibody is a Rabbit Polyclonal against TERF1.

Target:	Telomeric Repeat-Binding Factor 1 (TERF1)
Clonality:	Polyclonal
Reactivity:	Human, Mouse
Tested Applications:	ELISA, WB, IHC
Host:	Rabbit
Recommended dilutions:	WB: 1/500 - 1/2000, IHC: 1/50 - 1/200. Optimal dilutions/concentrations should be determined by the end user.
Conjugation:	Unconjugated
Immunogen:	telomeric repeat binding factor (NIMA-interacting) 1
Isotype:	IgG
Form:	Liquid
Purity:	≥ 95% (SDS-PAGE)

Datasheet

Version: 2.0.0
Revision date: 04 May 2025



Purification:	Purified by immunogen affinity chromatography.
Storage:	Aliquot and store at -20°C. Avoid repeated freeze/thaw cycles.
Validity:	12 months.
UniProt Primary AC:	P54274 (UniProt , ExPASy)
Gene Symbol:	TERF1
GeneID:	7013
OMIM:	600951
HGNC:	11728
KEGG:	hsa:7013
Ensembl:	ENSG00000147601
String:	9606.ENSP00000276603
Molecular Weight:	Observed MW: 62 kDa
Buffer:	PBS, pH 7.3, with 0.02% sodium azide and 50% glycerol.
Concentration:	2 mg/ml
Note:	THIS PRODUCT IS FOR RESEARCH USE ONLY. NOT FOR USE IN DIAGNOSTIC, THERAPEUTIC OR COSMETIC PROCEDURES. NOT FOR HUMAN OR ANIMAL CONSUMPTION.

For Reference Only