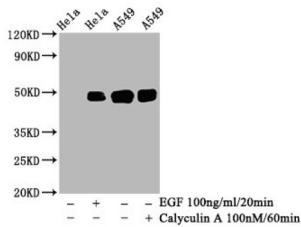


## JUN (pS63) Antibody

Catalogue No.: abx243021



### Western Blot

Positive WB detected in: HeLa whole cell lysate, A549 whole cell lysate (treated with Calyculin A or EGF)

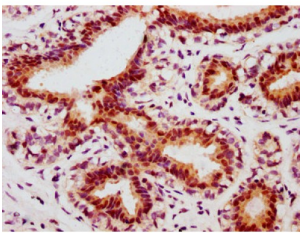
All lanes: Phospho-JUN antibody at 0.95 µg/ml

### Secondary

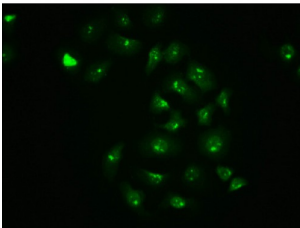
Goat polyclonal to rabbit IgG at 1/50000 dilution

Predicted band size: 48 KDa

Observed band size: 48 KDa



Immunohistochemistry analysis of JUN (pS63) Antibody diluted at 1/100 and staining in paraffin-embedded human breast cancer. After dewaxing and hydration, antigen retrieval was mediated by high pressure in a citrate buffer (pH 6.0). Section was blocked with 10% normal goat serum 30min at RT. Then primary antibody (1% BSA) was incubated at 4°C overnight. The primary is detected by a biotinylated secondary antibody and visualized using an HRP conjugated SP system.



Immunofluorescence staining of A549 cells with JUN (pS63) Antibody at 1/100, counter-stained with DAPI. The cells were fixed in 4% formaldehyde, permeabilized using 0.2% Triton X-100 and blocked in 10% normal Goat Serum. The cells were then incubated with the antibody overnight at 4°C. The secondary antibody was AF488-conjugated AffiniPure Goat Anti-Rabbit IgG (H+L).

JUN (pS63) Antibody is a Monoclonal Antibody against JUN.

<b>Target:</b>	JUN
<b>Clonality:</b>	Monoclonal
<b>Reactivity:</b>	Human
<b>Expression:</b>	Recombinant
<b>Tested Applications:</b>	ELISA, WB, IHC, IF/ICC
<b>Host:</b>	Rabbit

**Recommended dilutions:** WB: 1/500 - 1/5000, IHC: 1/50 - 1/200, IF/ICC: 1/20 - 1/200. Optimal dilutions/concentrations should be determined by the end user.

# Datasheet

Version: 2.0.0  
Revision date: 05 Sep 2025



<b>Conjugation:</b>	Unconjugated
<b>Immunogen:</b>	A synthesized peptide derived from human Phospho-JUN (S63).
<b>Isotype:</b>	IgG
<b>Form:</b>	Liquid
<b>Purification:</b>	Purified by affinity chromatography.
<b>Storage:</b>	Aliquot and store at -20 °C. Avoid repeated freeze/thaw cycles.
<b>UniProt Primary AC:</b>	P05412 ( <a href="#">UniProt</a> , <a href="#">ExPASy</a> )
<b>KEGG:</b>	hsa:3725
<b>String:</b>	<a href="#">9606.ENSP00000360266</a>
<b>Buffer:</b>	PBS, pH 7.4, 150 mM NaCl, 0.02% sodium azide and 50% glycerol.
<b>Note:</b>	THIS PRODUCT IS FOR RESEARCH USE ONLY. NOT FOR USE IN DIAGNOSTIC, THERAPEUTIC OR COSMETIC PROCEDURES. NOT FOR HUMAN OR ANIMAL CONSUMPTION.

For Reference Only