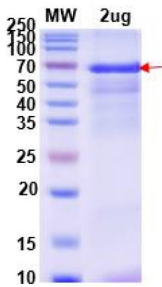
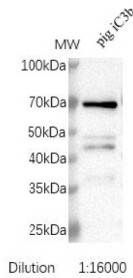


Inactivated Complement C3b (iC3b) Antibody

Catalogue No.: abx376573



SDS-PAGE analysis of recombinant Pig Inactivated Complement Factor 3b Protein expressed in *E. coli*.



Western blot analysis of recombinant Pig Inactivated Complement Factor 3b Protein using recombinant Pig Inactivated Complement Factor 3b Antibody (1/16000 dilution).

Pig Inactivated Complement Factor 3b (iC3b) Antibody is a Rabbit Polyclonal against Inactivated Complement Factor 3b (iC3b).

Target:	Inactivated Complement C3b (iC3b)
Clonality:	Polyclonal
Reactivity:	Pig
Expression:	Recombinant
Tested Applications:	ELISA, WB, SDS-PAGE
Host:	Rabbit
Recommended dilutions:	WB, Recombinant protein: 0.2-0.8 µg per lane, 1/64000-1/256000. WB, Endogenous lysate: 10-30 µg per lane, 1/1000-1/4000. Optimal dilutions/concentrations should be determined by the end user.
Conjugation:	Unconjugated
Immunogen:	Recombinant protein corresponding to 747-1302 AA derived from Pig iC3b expressed in <i>E. coli</i> .
Isotype:	IgG

Datasheet

Version: 5.0.0
Revision date: 20 Dec 2025



Form:	Liquid
Purification:	Purified by affinity chromatography using epitope-specific immunogen.
Storage:	Store at 4°C for short-term storage. For long-term storage, aliquot and store at -20°C, with up to 50% glycerol. Store at a concentration between 0.5-2 mg/ml. Avoid repeated freeze/thaw cycles.
UniProt Primary AC:	P01025 (UniProt , ExPASy)
Molecular Weight:	Calculated MW: 65.2 kDa
Sequence:	MGSSHHHHHH SSGLEVLFGQ PGSSDLDEEI IPEEDIISRS QFPESWLWTI EEFKEPDKNG ISTKTMNVFL KDSITTWEIL AVSLSDKKG I CVADPYEVVV KQDFIDLRL PYSVVRNEQV EIRAILYNYR EAEDLKVRVE LLYNPAFCSL ATAKKRHQQT LTVPAKSSVP VPYIIVPLKT GLQEVEVKAA VYNHFISDGV KKTLLKVVPEG MRVNKTVVTR TLDPEHKGQQ GVQREEIPPA DLSDQVPDTE SETKILLQGT PVAQMVEDAI DGDRLKHLIQ TPSGCGEQNM IGMTPTVIAV HYLDSTEQWE KFGLEKRQEA LELIKKGYTQ QLAFRQKNSA FAAFQDRLSS TLLTAYVVKV FAMAANLIAI DSQVLCGAVK WLILEKQKPD GVFEENGPVI HQEMIGGFKN TEEKDVSLTA FVLIALQEAK DICEPQVNSL LRSINKARDF LADYYLELKR PYTVAIAGYA LALSDKLDEP FLNKLLSTAK ERNRWEEPGQ KLHNVEATSY ALLALLVVKD FDSVPPIVRW LNEQRYGGG YGSTQATFMV FQALAQYQKD VPDHKDLNLD VSIHLPSRS
Buffer:	PBS, pH 7.4
Specificity:	Recognises Pig iC3b Protein in Indirect ELISA and Western blot.
Concentration:	Antibody: 3.53 mg/ml Protein: 1.4 mg/ml
Note:	THIS PRODUCT IS FOR RESEARCH USE ONLY. NOT FOR USE IN DIAGNOSTIC, THERAPEUTIC OR COSMETIC PROCEDURES. NOT FOR HUMAN OR ANIMAL CONSUMPTION.

For Reference Only