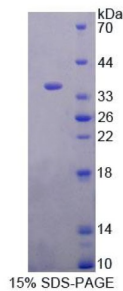


## Mouse Complement Component 8a (C8a) Protein

Catalogue No.: abx650473



SDS-PAGE analysis of Mouse C8a Protein.

Mouse C8a Protein is a recombinant Mouse protein expressed in *E. coli*.

**Target:** Complement Component 8a (C8a)

**Origin:** Mouse

**Expression:** Recombinant

**Tested Applications:** WB, SDS-PAGE

**Host:** *E. coli*

**Conjugation:** Unconjugated

**Form:** Lyophilized

**Activity:** Not tested

**Purity:** > 95%

**Reconstitution:** To keep the original salt concentration, we recommend reconstituting to the original concentration prior to lyophilization (see Concentration) in ddH<sub>2</sub>O. If a lower concentration is required, dilute in PBS, pH 7.4. If a higher concentration is required, the product can be reconstituted directly in PBS, pH 7.4, though please note that this will change the overall salt concentration. The stock concentration should be between 0.1-1.0 mg/ml. Do not vortex.

**Storage:** Store lyophilised form at 2-8°C for up to 1 month. For longer periods, store lyophilised or liquid at -80°C. Avoid repeated freeze-thaw cycles.

**UniProt Primary AC:** Q8K182 ([UniProt](#), [ExPASy](#))

**KEGG:** mmu:230558

# Datasheet

Version: 5.0.0

Revision date: 06 Jan 2026



**String:** [10090.ENSMUSP00000067541](#)

**Molecular Weight:** Calculated MW: 35.6 kDa

**Sequence Fragment:** Gln21-Gln300

**Tag:** N-terminal His tag

**Buffer:** Prior to lyophilization: PBS, pH 7.4, containing 0.01% Sarcosyl, 1 mM DTT, 5% Trehalose and Proclin-300.

**Concentration:** Prior to lyophilization: 200 µg/ml

**Note:** THIS PRODUCT IS FOR RESEARCH USE ONLY. NOT FOR USE IN DIAGNOSTIC, THERAPEUTIC OR COSMETIC PROCEDURES. NOT FOR HUMAN OR ANIMAL CONSUMPTION.

For Reference Only