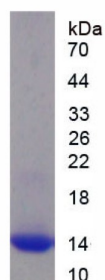


## Rat Complement Fragment C4a (C4a) Protein

Catalogue No.: abx653025



Rat Complement Fragment C4a (C4a) Protein is a recombinant Rat protein expressed in *E. coli*.

**Target:** Complement Fragment C4a (C4a)

**Origin:** Rat

**Expression:** Recombinant

**Tested Applications:** WB, SDS-PAGE

**Host:** *E. coli*

**Conjugation:** Unconjugated

**Form:** Lyophilized

**Activity:** Not tested

**Purity:** > 90%

**Reconstitution:** To keep the original salt concentration, we recommend reconstituting to the original concentration prior to lyophilization (see Concentration) in ddH<sub>2</sub>O. If a lower concentration is required, dilute in 10 mM PBS, pH 7.4. If a higher concentration is required, the product can be reconstituted directly in 10 mM PBS, pH 7.4, though please note that this will change the overall salt concentration. The stock concentration should be between 0.1-1.0 mg/ml. Do not vortex.

**Storage:** Store lyophilized form at 2-8°C for up to 1 month. For longer periods, store lyophilized or liquid at -80°C. Avoid repeated freeze-thaw cycles.

**Molecular Weight:** Calculated MW: 12.3 kDa  
Observed MW: 14 kDa

**Sequence Fragment:** Asn678-Arg753

# Datasheet

Version: 7.0.0

Revision date: 09 Feb 2026



**Sequence:** NVN FQKAISEKLG QYSSPDTKRC CQDGMTKLPM ARTCEQRAAR VPQPACREPF LSCCKFAEDL  
RRNQTRSQAG LAR

**Tag:** N-terminal His tag

**Buffer:** Prior to lyophilization: PBS, pH 7.4, containing 0.01% Sarcosyl, 5% Trehalose.

**Concentration:** Prior to lyophilization: 200 µg/ml

**Note:** THIS PRODUCT IS FOR RESEARCH USE ONLY. NOT FOR USE IN DIAGNOSTIC, THERAPEUTIC OR COSMETIC PROCEDURES. NOT FOR HUMAN OR ANIMAL CONSUMPTION.

For Reference Only