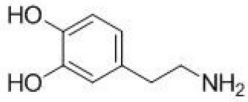
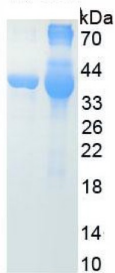


Dopamine (DA) (HSA)

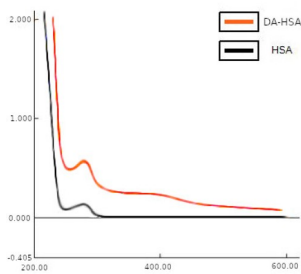
Catalogue No.: abx655937



Chemical structure of unconjugated Dopamine.



SDS-PAGE analysis of Dopamine (HSA).



UV spectrum of Dopamine (HSA).

Dopamine is a small molecule.

Target: Dopamine (DA)

Origin: General

Expression: Synthetic

Tested Applications: SDS-PAGE

Host: Synthetic

Conjugation: HSA

Form: Lyophilized

Datasheet

Version: 1.0.0
Revision date: 30 Nov 2025



Activity:	Not tested
Purity:	> 90%
Reconstitution:	To keep the original salt concentration, we recommend reconstituting to the original concentration prior to lyophilization (see Concentration) in ddH ₂ O. If a lower concentration is required, dilute in PBS, pH 7.4. If a higher concentration is required, the product can be reconstituted directly in PBS, pH 7.4, though please note that this will change the overall salt concentration. The stock concentration should be between 0.1-1.0 mg/ml. Do not vortex.
Storage:	Store at 2-8°C for up to one month. For long-term storage, store at -80°C. Avoid repeated freeze/thaw cycles.
Molecular Weight:	Unconjugated MW: 153.2 g/mol
Molecular Formula:	C ₈ H ₁₁ NO ₂
Buffer:	Prior to lyophilization: PBS, pH 7.4.
Concentration:	Prior to lyophilization: 200 µg/ml
Note:	THIS PRODUCT IS FOR RESEARCH USE ONLY. NOT FOR USE IN DIAGNOSTIC, THERAPEUTIC OR COSMETIC PROCEDURES. NOT FOR HUMAN OR ANIMAL CONSUMPTION.

For Reference Only