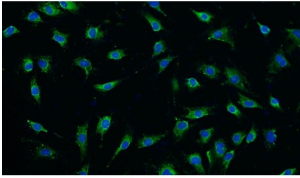
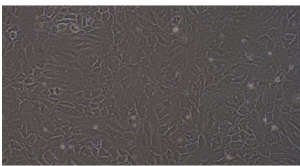


## Rat Osteoblasts (OB)

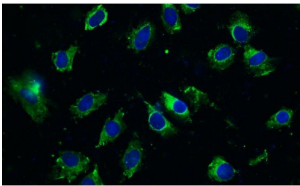
Catalogue No.: abx700167



Immunofluorescence identification of Collagen Type I (100X).



Morphology of OB on day 5 of primary culture (100X).



Immunofluorescence identification of Collagen Type I (200X).

Rat Osteoblasts (OB) are Adherent Rat Osteoblast from Rat Neonatal rat calvarium bone.

**Target:** Osteoblasts (OB)

**Origin:** Rat

**Host:** Rat

**Biological Activity:** Cell activity: > 85% (viability by Trypan Blue exclusion)

**Purity:** Negative for HIV-1, HBV, HCV, mycoplasma, bacteria, yeast and fungi.

**Storage:** Shipped at -70°C. Upon receipt, store in liquid nitrogen (-196°C). Avoid repeated freeze/thaw cycles.

**Buffer:** Contains 90% FBS and 10% DMSO.

**Note:** THIS PRODUCT IS FOR RESEARCH USE ONLY. NOT FOR USE IN DIAGNOSTIC, THERAPEUTIC OR COSMETIC PROCEDURES. NOT FOR HUMAN OR ANIMAL CONSUMPTION.

This product is shipped with dry ice.

**Directions for use: Recommended Cell Culture Conditions:**

L-DMEM + 10% FBS + Rat Osteoblast Growth Supplement + 1% Penicillin-Streptomycin Solution @ 37 °C, 95% air, 5% CO<sub>2</sub>.

**Cell Recovery:** Thaw cells in a 37 °C water bath with shaking until the mixture has dissolved. Transfer to a centrifuge tube and add culture medium (see Recommended Cell Culture Conditions above) at a volume 3-5 times the volume of the cells. Centrifuge at 1000 RPM for 5 minutes and discard the supernatant. Transfer to a T25 flask for culture.

**Suggested Cell Passage Procedure:** Cells should be 85-95% confluent before cell passage is carried out.

1. Discard the medium and wash with PBS 1-2 times.
2. Add 1 ml of Trypsin at 37 °C, then observe the cells under a microscope.
3. When the cells appear retracted and rounded, gently tap the culture flask to detach the cells. Stop the trypsinization by adding 2 ml of culture medium containing 10% serum.
4. Add fresh medium to resuspend the cells. The recommended ratio of primary cells is 1/2. Pipette to obtain a single cell suspension.

For Reference Only