

## YAP1 Polyclonal Antibody

CAB1002

### Description

---

This YAP1 Polyclonal Antibody is supplied as a kit for advanced applications. The kit includes Bradford Reagent to quantify total protein concentration for accurate sample normalization (Optional).

### Product Information

---

<b>SKU:</b>	CAB1002
<b>Contents:</b>	20 $\mu$ L, 100 $\mu$ L Bradford Reagent: 1 vial (2ml)
<b>Category:</b>	Polyclonal Antibody
<b>Synonyms:</b>	YAP, YKI, COB1, YAP2, YAP-1, YAP65, YAP1
<b>Clone:</b>	-
<b>Applications:</b>	<b>WB</b> <b>IHC-P</b> <b>IF/ICC</b> <b>IP</b> <b>ELISA</b>
<b>Conjugation:</b>	Unconjugated
<b>Reactivity:</b>	Human, Mouse

### Antibody Data

---

<b>Gene ID:</b>	10413
<b>Uniprot:</b>	AB_2757539
<b>Host Species:</b>	Rabbit
<b>Purification:</b>	Affinity purification
<b>Observed MW:</b>	70kDa
<b>Calculated MW:</b>	54kDa

## Preparation & Storage

**Storage:** Store at -20°C. Avoid freeze / thaw cycles. Buffer: PBS containing 50% glycerol, preserved with proclin300 or sodium azide (as specified on the Certificate of Analysis), pH 7.3.

Store Bradford Reagent at Room Temperature for 1 Year.

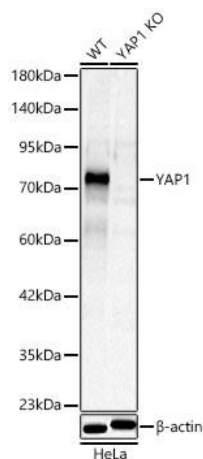
**Positive Sample:** HeLa

**Recommended Dilutions:**

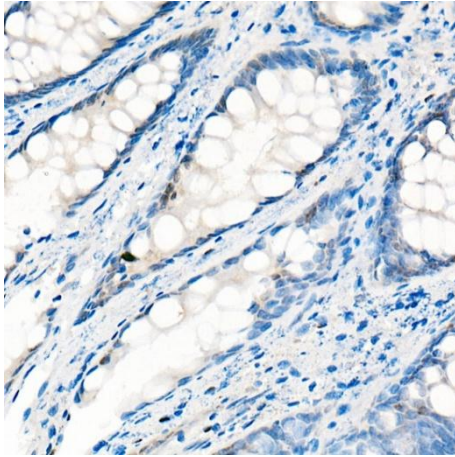
<b>WB</b>	1:2000 - 1:20000
<b>IHC-P</b>	1:500 - 1:1000
<b>IF/ICC</b>	1:50 - 1:200
<b>IP</b>	0.5µg-4µg antibody for 200µg-400µg extracts of whole cells
<b>ELISA</b>	Recommended starting concentration is 1 µg/mL. Please optimize the concentration based on your specific assay requirements.

**Protein Quantification (Optional):** To quantify total protein levels, use the Bradford Reagent included in this kit. Visit <https://www.assaygenie.com/bradford-protein-assay-protocol/> to view the full protocol

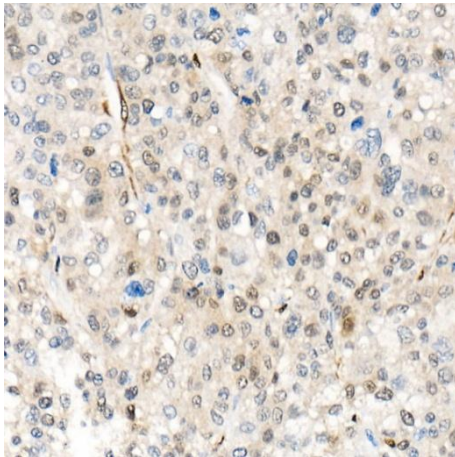
## Validation Data



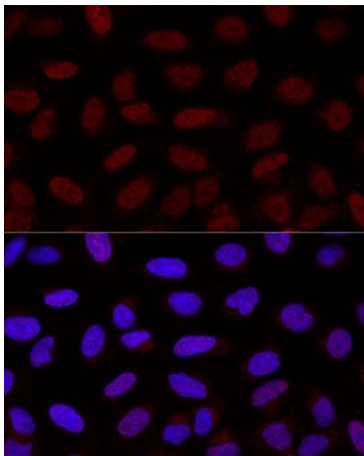
Western blot analysis of lysates from wild type (WT) and knockout (KO) HeLa cells using Rabbit pAb (CAB1002) at 1:2000 dilution. Secondary antibody: HRP-conjugated Goat anti-Rabbit IgG (H+L) (CABS014) at 1:10000 dilution. Lysates/proteins: 25 µg per lane. Blocking buffer: 3% nonfat dry milk in TBST. Detection: ECL Basic Kit (AbGn00020). Exposure time: 30s.



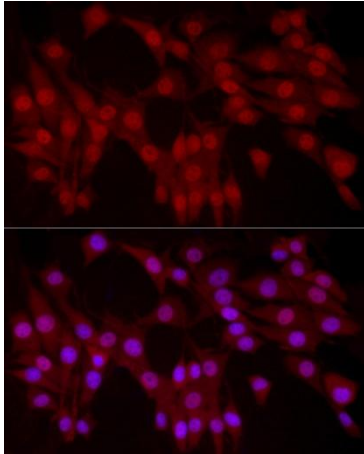
Immunohistochemistry analysis of paraffin-embedded Human colon (low expression samples) using Rabbit pAb (CAB1002) at dilution of 1:1000 (40x lens). High pressure antigen retrieval performed with 0.01M Citrate buffer (pH 6.0) prior to IHC staining.



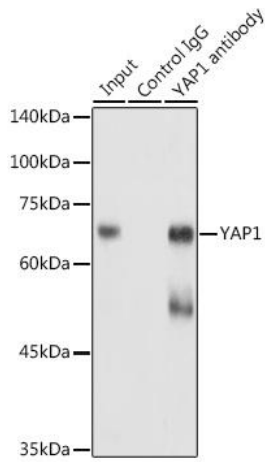
Immunohistochemistry analysis of paraffin-embedded Human liver cancer using Rabbit pAb (CAB1002) at dilution of 1:1000 (40x lens). High pressure antigen retrieval performed with 0.01M Citrate buffer (pH 6.0) prior to IHC staining.



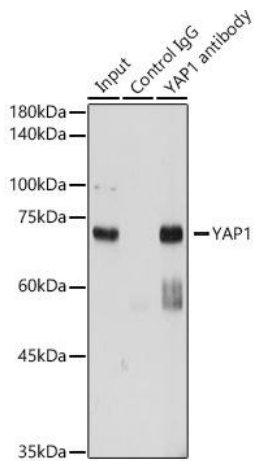
Confocal immunofluorescence analysis of U2OS cells using Rabbit pAb (CAB1002) at dilution of 1:200. Blue: DAPI for nuclear staining.



Immunofluorescence analysis of NIH/3T3 cells using Rabbit pAb (CAB1002) at dilution of 1:100 (40x lens). Secondary antibody: Cy3-conjugated Goat anti-Rabbit IgG (H+L) (CABS007) at 1:500 dilution. Blue: DAPI for nuclear staining.



Immunoprecipitation analysis of 300  $\mu$ g extracts of HeLa cells using 3  $\mu$ g antibody (CAB1002). Western blot was performed from the immunoprecipitate using antibody (CAB1002) at a dilution of 1:1000.



Immunoprecipitation analysis of 300  $\mu$ g extracts of HeLa cells using 3  $\mu$ g antibody (CAB1002). Western blot was performed from the immunoprecipitate using (CAB1002) at a dilution of 1:1000.