

WDFY1 Antibody

PACO49234

Description

This WDFY1 Antibody is supplied as a kit for advanced applications. The kit includes Bradford Reagent to quantify total protein concentration for accurate sample normalization (Optional).

Product Information

SKU:	PACO49234
Contents:	50µg Bradford Reagent: 1 vial (2ml)
Category:	Polyclonal Antibody
Synonyms:	FENS 1 antibody, FENS-1 antibody, FENS1 antibody, KIAA1435 antibody, Phosphoinositide binding protein 1 antibody, Phosphoinositide binding protein SR1 antibody, Phosphoinositide-binding protein 1 antibody, WD repeat and FYVE domain containing 1 antibody, WD repeat and FYVE domain-containing protein 1 antibody, WD40 and FYVE domain containing protein 1 antibody, WD40- and FYVE domain-containing protein 1 antibody, WDF1 antibody, WDFY1 antibody, WDFY1_HUMAN antibody, ZFYVE17 antibody, Zinc finger FYVE domain containing protein 17 antibody, Zinc finger FYVE domain-containing protein 17 antibody
Clone:	Polyclonal
Applications:	ELISA WB
Conjugation:	Non-conjugated
Reactivity:	Human, Mouse

Antibody Data

Isotype:	IgG
Uniprot:	Q8IWB7
Host Species:	Rabbit
Purification:	>95%, Protein G purified
Immunogen:	Recombinant Human WD repeat and FYVE domain-containing protein 1 protein (261-357AA)
Immunogen Species:	Homo sapiens (Human)

Manufacturers Statement: This final kit system is assembled and quality-released by Assay Genie Limited.

Buffer: Preservative: 0.03% Proclin 300 Constituents: 50% Glycerol, 0.01M PBS,
PH 7.4

Form: Liquid

Preparation & Storage

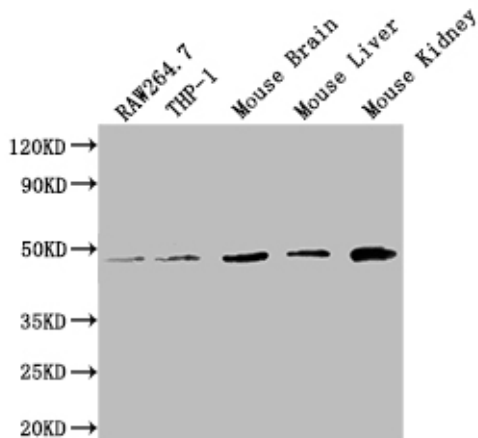
Storage: Upon receipt, store at -20°C or -80°C. Avoid repeated freeze. Store Bradford Reagent at Room Temperature for 1 Year.

Recommended Dilutions:	Application	Recommended Dilution
	WB	1:500-1:5000

Protein Quantification (Optional): To quantify total protein levels, use the Bradford Reagent included in this kit. Visit <https://www.assaygenie.com/bradford-protein-assay-protocol/> to view the full protocol

Validation Data

Image



Description

Western Blot Positive WB detected in: RAW264.7 whole cell lysate, THP-1 whole cell lysate, Mouse Brain tissue lysate, Mouse Liver tissue lysate, Mouse Kidney tissue lysate All lanes: WDFY1 antibody at 1:2000 Secondary Goat polyclonal to rabbit IgG at 1/50000 dilution Predicted band size: 47 kDa Observed band size: 47 kDa